

Electronics Audio/Video Computer Parts

New design with patent

- Profile
- Products
- New Products
- A-adcon News
- Contact Us



To Connect The Future With Adcon

YI WAI INDUSTRIAL CO., LTD.

[CLICK HERE TO A&AHCON INDUSTRIAL CO.,LTD.](#)

~ SINCE 1980 ~

- | | | | |
|-----------------------------|-----------------|--------------------------------------|--------------------|
| - SMB CONNECTOR | - MCX CONNECTOR | - COMPUTER MULTI-APERTURED CONNECTOR | -MIC CONNECTOR |
| -AUTO CIGARETTE PLUG&SOCKET | -FUSE HOLDER | COMPUTER CABLE MODULAR | CARAMIC LAMPHOLDER |

E-MAIL: yiwai751@ms9.hinet.net E-MAIL: aadcon@ms39.hinet.net
 TEL:886-6-2677751~3 FAX:886-6-2696498.2697632 <http://www.a-adcon.com>
 Taiwan Head office: NO 42-1, 17TH STREET CHUNG TEO, TAINAN CITY TAIWAN
 A & AKCON ELECTRONIC COMPANY LIMITED
 NO 1 LANE 86 yonghong diyangcao jiangbei ningbo china
[Http://www.a-ahcon.com](http://www.a-ahcon.com) Email:a-ah@a-ahcon.com a-ak@a-akcon.com
 TEL:86-574-87226908 87227908 87221708 FAX:86-574-87222568



ADC CON

Since 1980

a division of Yi Wai, Inc.

Electronics, Audio/Video & Computer Parts



Yi Wai Industrial Co., Ltd. has been manufacturing a wide range of electronic products including RCA plugs, banana plugs, binding posts, switches, RF connectors, etc... It began business in 1980 with the mission of providing the best products with the most competitive price.



Yi Wai is equipped with precise manufacturing equipment such as HIGH SPEED MACHINES and HIGH PRECISION MACHINING CNC AUTOMATIC LATHE MACHINES. We provide superior products and service for customers throughout the world with 100% quality guarantees. We can also manufacture specific products according to our customers' needs. Maintaining a product's high quality is one of the main reasons contributing to the success of Yi Wai. A commitment to quality, price, and lead time have seen Yi Wai become one of the leading manufacturers and exporters of electronic connectors in Taiwan.



Company Profile

Name: Yi Wai Industrial Co., Ltd.
A & adcon electronic Co., Ltd.

- **Address:** NO 42-1, 17th Street Chung Teo, Tainan Taiwan, R.O.C.
Tel: 886-6-2677751-3, 2677783-4
Fax: 886-6-2696498, 2697632
- **Establishment:** 1980
- **Capital:** NT\$25,000,000
- **Sales:** US\$3,000,000 in 1996
- **Managing Director:** James H.S. Chang
- **Business Nature:** Manufacturer & Exporter
- **Main Business Scope:**
RCA plugs, banana plugs, binding posts, terminal blocks
Plugs, jacks, switches, clips, relays
RF connectors, BNC, UHF, N, TNC, Twinax, SMA, SMB, F, and Interseries
Adaptors
- **Main Market:** Europe, N. America, Australia and other Asian countries
- **Banker:** 1. First commercial bank tainan branch
2. Chang Hwa Commercial Bank, Ltd.



Then I'll Receive Your Mail





RCA PLUGS

MR-02-G
Gold Plated
MR-02-B
Black Plated
MR-02-R
Tin Nickel Plated
MR-02-K
For 5.6mm Cable



MR-03-G
Gold Plated
MR-03-B
Black Plated
MR-03-R
Tin Nickel Plated
MR-03-K
For 5.6mm Cable



MR-04
Banana Type Rca Plug



MR-05
Banana Type Rca Plug



MR-06-G
Gold Plated
MR-06-B
Paint Resprayed



MR-06-R
Tin Nickel Plated
Teflon Insulation
For 8.9mm Cable

MR-11-G
Gold Plated
MR-11-P
Paint Resprayed



MR-11-R
Tin Nickel Plated
Teflon Insulation
For 8.9mm Cable

MR-12-G
Gold Plated
MR-12-P
Paint Resprayed



MR-12-R
Tin Nickel Plated
Teflon Insulation
For 5.6mm Cable

MR-13-B
Black Plated
MR-13-C
Chrome Plated
MR-13-G
Gold Plated



MR-13-R
Tin Nickel Plated
Teflon Insulation
For 7mm, 8mm Cable

MR-14-B
Black Plated
MR-14-C
Chrome Plated
MR-14-G
Gold Plated



MR-14-R
Tin Nickel Plated
Teflon Insulation
For 5.6mm Cable

MR-15-B
Black Plated
MR-15-C
Chrome Plated
MR-15-G
Gold Plated



MR-15-R
Tin Nickel Plated
Teflon Insulation
For 6.7mm Cable

MR-16-B
Black Plated
MR-16-C
Chrome Plated



MR-16-G
Gold Plated
MR-16-R
Tin Nickel Plated
For 6.8mm Cable

MR-17-B
Black Plated
MR-17-C
Chrome Plated



MR-17-G
Gold Plated
MR-17-R
Tin Nickel Plated
For 6.8mm Cable

MR-18-B
Black Plated
MR-18-C
Chrome Plated



MR-18-G
Gold Plated
MR-18-R
Tin Nickel Plated
For 6.8mm Cable

MR-19-B
Black Plated
MR-19-C
Chrome Plated
MR-19-G
Gold Plated



MR-19-R
Tin Nickel Plated
For 10mm Cable



HOME



RCA PLUGS

MR-20-B
Black Plated.
MR-20-C
Chrome Plated.

MR-20-G
Gold Plated
MR-20-R
Tin Nickel Plated
For 5-7mm Cable.



MR-21-B
Black Plated.
MR-21-C
Chrome Plated.
MR-21-G
Gold Plated

MR-21-R
Tin Nickel Plated
Teflon Insulation
For 6-8mm Cable.



MR-22-B
Black Plated.
MR-22-C
Chrome Plated.
MR-22-G
Gold Plated

MR-22-R
Tin Nickel Plated
For 5-6mm Cable.



MR-23A-B
Black Plated.
MR-23A-C
Chrome Plated.
MR-23A-G
Gold Plated

MR-23A-R
Tin Nickel Plated
For 5-8mm Cable.



MR-24-P
Paint Resprayed
For 5-6mm Cable.



MR-25-B
Black Plated.
MR-25-C
Chrome Plated.

MR-25-G
Gold Plated
MR-25-P
Paint Resprayed
For 5-6mm Cable.



MR-26-B
Black Plated.
MR-26-C
Chrome Plated.
MR-26-G
Gold Plated
MR-26-R
Tin Nickel Plated
For 6-8mm Cable.



MR-27-B
Black Plated.
MR-27-C
Chrome Plated.
MR-27-G
Gold Plated
MR-27-R
Tin Nickel Plated
For 5-6mm Cable.



MR-28-B
Black Plated.
MR-28-C
Chrome Plated.
MR-28-G
Gold Plated
MR-28-R
Tin Nickel Plated
For 5-6mm Cable.



MR-29-B
Black Plated.
MR-29-C
Chrome Plated.
MR-29-G
Gold Plated
MR-29-R
Tin Nickel Plated
For 5-6mm Cable.



MR-30-B
Black Plated.
MR-30-C
Chrome Plated.
MR-30-G
Gold Plated

MR-30-R
Tin Nickel Plated
For 5-6mm Cable.



MR-31-B
Black Plated.
MR-31-G
Gold Plated
For 5-6mm Cable.



MR-32-B
Black Plated.
MR-32-G
Gold Plated
Teflon Insulation
For 10mm Cable.



MR-33
Aluminum Barrel
For 6-7mm Cable.



MR-34
Aluminum Barrel
For 6-7mm Cable



MR-35
Aluminum Barrel
For 6-7mm Cable





RCA PLUGS

MR-36
Aluminum Barrel
For 6-7mm Cable



MR-37
Black Plated



MR-38-B
Black Plated
MR-38-G
Gold Plated
For 5-7mm Cable.



MR-39-B
Black Plated
MR-39-G
Gold Plated
MR-39-N
Nickel Plated
For 6-7mm Cable.



MR-40-B
Black Plated
MR-40-G
Gold Plated
MR-40-N
Nickel Plated
For 6-7mm Cable.



MR-41-B
Black Plated
MR-41-G
Gold Plated

MR-41-N
Nickel Plated
For 6-7mm Cable.



MR-42-B
Black Plated
MR-42-G
Gold Plated
For 6-8mm Cable.



MR-43-B
Black Plated
MR-43-G
Gold Plated

MR-43-N
Nickel Plated
For 5-6mm Cable.



MR-46-B
Black Plated
MR-46-G
Gold Plated

MR-46-N
Nickel Plated
For 6-7mm Cable.



MR-47-B
Black Plated
MR-47-G
Gold Plated
MR-47-N
Nickel Plated
For 5-6mm Cable.



MR-48-B
Black Plated
MR-48-G
Gold Plated
MR-48-N
Nickel Plated
For 5-6mm Cable.



MR-49-B
Black Plated
MR-49-G
Gold Plated

MR-49-N
Nickel Plated
For 6-7mm Cable.



MR-50-B
Black Plated
MR-50-C
Chrome Plated
MR-50-G
Gold Plated
Right Angle Handle
Teflon Insulation.
For 6mm Cable.



MR-52-G
Gold Plated
Right Angle Handle.
For 7-8mm Cable.



MR-53-G
Gold Plated
Rca Plug To Rca Jack.
Right Angle Handle.



MR-54-G
Gold Plated
Rca Plug To Dual Rca Jack.
T. Type.



MR-55-G
Gold Plated
Male To Dual Female.



MR-56-G
Gold Plated
Three Female.





RCA PLUGS

MR-57-G
Gold Plated
Double RCA Phone Plug.



MR-58-N
Nickel Plated
MR-58-G
Gold Plated
Right-Angle RCA Adapter
Plastic Handle.
RCA Male To RCA Female
Color: Red, Black.



MR-59-N
Nickel Plated
MR-59-G
Gold Plated
Right-Angle RCA Adapter
Plastic Handle.
RCA Male To RCA Female
Color: Red, Black.



MR-60-N
Nickel Plated
MR-60-G
Gold Plated
Plastic Handle RCA Adapter
RCA Male To RCA male
Color: Red, Black.



MR-61-N
Nickel Plated
MR-61-G
Gold Plated
Right Angle RCA Plug
Solderless Type.



MR-62-G
Gold Plated
RCA Phone Plug
W/Shielded
Handle & Cable
Protector
For 3-4mm Cable
MR-62-N
Nickel Plated



MR-63-N
Nickel Plated
MR-63-G
Gold Plated
RCA Phone Plug
Protector.



MR-64-N
Nickel Plated
MR-64-G
Gold Plated
RCA Phone Plug.



MR-65-C
Chrome Plated.
Teflon Insulation
For 11-12mm Cable.



MR-66-G
Gold Plated
MR-66-B
Black Plated
MR-66-R
Tin Nickel Plated



MR-67-G
Gold Plated
MR-67-B
Black Plated
MR-67-R
Tin Nickel Plated



MR-68-G
Gold Plated
MR-68-B
Black Plated
MR-68-R
Tin Nickel Plated



MR-69-G
Gold Plated
MR-69-B
Black Plated
MR-69-R
Tin Nickel Plated





RCA JACKS

MJ-80-B Black Plated
MJ-80-C Chrome Plated
MJ-80-G Gold Plated
MJ-80-C Teflon Insulation
 For 7mm, 8mm Cable



MJ-81-B Black Plated
MJ-81-C Chrome Plated
MJ-81-G Gold Plated
MJ-81-C Teflon Insulation *
 For 5mm, 6mm Cable



MJ-82-B Black Plated
MJ-82-C Chrome Plated
MJ-82-G Gold Plated
 For 5-6mm Cable



MJ-83-B Black Plated
MJ-83-C Chrome Plated
MJ-83-G Gold Plated
 For 5-6mm Cable



MJ-84-G Gold Plated
MJ-84-B Black Plated
MJ-84-C Chrome Plated
MJ-84-P Paint Resprayed.
 For 5-6mm Cable



MJ-85
 Aluminum Barrel
 Color: Red, Blue, Black, Gold;
 For 6mm, 7mm Cable.



MJ-86
 Aluminum Barrel
 Color: Red, Blue, Black, Gold;
 For 4mm, 5mm Cable.



MJ-87-B Black Plated
MJ-87-G Gold Plated
MJ-87-N Nickel Plated
 For 6-7mm Cable



MJ-88-B Black Plated
MJ-88-G Gold Plated
MJ-88-N Nickel Plated
 For 6-7mm Cable



MJ-89-B Black Plated
MJ-89-G Gold Plated
MJ-89-N Nickel Plated
 For 6-7mm Cable



MJ-90-B Black Plated
MJ-90-G Gold Plated
MJ-90-N Nickel Plated
 For 5-6mm Cable



MJ-91-B Black Plated
MJ-91-G Gold Plated
MJ-91-N Nickel Plated
 For 5-6mm Cable



MJ-92-A Teflon Insulation
MJ-92-B Abs Insulation
 Rca Chassis Mount Socket.



MJ-93-A
 Teflon Insulation



MJ-94-A
 Teflon Insulation



MJ-96
 Rca Chassis Mount Socket.
 Teflon Insulation



MJ-97-G Gold Plated
MJ-97-N Nickel Plated
 Rca Chassis Mount Socket.
 Abs Insulation.



MJ-98-G Gold Plated
MJ-98-N Nickel Plated
 Rca Chassis Mount Socket.





RCA JACKS

MJ-99-G
Gold Plated
MJ-99-N
Nickel Plated
Metal Handle W/Plastic Spring.
For 3-4mm Cable.



MJ-100-G
Gold Plated
MJ-100-N
Nickel Plated
Plastic Handle,
For 3-4mm Cable.
Color: Red, Black, Blue, White,
Yellow, Green, Gray.



MJ-101-G
Gold Plated
MJ-101-N
Nickel Plated
Plastic Handle.
For 3-4mm Cable.
Color: Red, Black, Blue, White,
Yellow, Green, Gray.



MJ-102-G
Gold Plated
MJ-102-N
Nickel Plated
Rca Female To Rca female.



MJ-103-G
Gold Plated
MJ-103-N
Nickel Plated
Rca Adapter.
Plastic Handle,
Rca Socket To Rca Socket.



MJ-104-G
Gold Plated
JM-104-N
Nickel Plated
Rca Adapter.
Plastic Handle.
Dual Rca Sockets To
Dual Rca Sockets.



MJ-525
Rca Phone Pin Jack (P.C. Type)



MJ-526
Rca Phone Pin Jack (P.C. Type)



MINI RCA PLUGS & JACKS

MJ-001
Mini Molded Rca
Phone Plug.



MJ-002
Mini Molded Angle Rca
Phone pin Jack
for P.C. Type.





BINDING POSTS

MB-120-G
MB-120-N
In-Line Banana Socket



MB-121-G
Gold Plated.
MB-121-N
Nickel Plated
Banana Socket.



MB-122-G
Gold Plated.
MB-122-N
Nickel Plated
Binding Post.



MB-123-G
Gold Plated.
MB-123-N
Nickel Plated
Binding Post.



MB-124-G
Gold Plated.
MB-124-N
Nickel Plated
Binding Post.



MB-125-G
Gold Plated.
MB-125-N
Nickel Plated
Binding Post.



MB-126-G
Gold Plated.
MB-126-N
Nickel Plated
Binding Post.



MB-127-G
Gold Plated.
MB-127-N
Nickel Plated
Binding Post.



MB-128-G
Gold Plated.
MB-128-N
Nickel Plated
Binding Post.



MB-129-G 2m/m
Gold Plated.
MB-129-N 2m/m
Nickel Plated
Binding Post.



MB-130-G 4m/m
Gold Plated.
MB-130-N 4m/m
Nickel Plated
Binding Post.



MB-130G-TZ
Gold Plated.



MB-131-G
Gold Plated.
MB-131-N
Nickel Plated
Binding Post.



MB-132-G
Gold Plated.
MB-132-N
Nickel Plated
Binding Post.



MB-133-G A 2mm
Gold Plated.
MB-133-N B 2mm
Nickel Plated
Dual Binding Post.



MB-133B-2G
Dual Binding Post



MB-131B-2G
Gold plated



MB-133G-T4
Dual Binding Post



MB-133-T4-AA
Binding Post



MB-134-G 2m/m
Gold Plated.
MB-134-N 2m/m
Nickel Plated
Dual Binding Post.





BINDING POSTS

MB-135-G 4m/m
Gold Plated.
MB-122-N 4m/m
Nickel Plated
Dual Binding Post.



MB-136
Bnc Plug to Binding Post.



MB-137
Bnc Male to,
Dual Binding Post.



MB-138
Bnc Male To,
Dual Binding Post.



MB-139 G
Gold Plated,
Binding Post.
10mm Post.



MB-140-G
Gold Plated
Binding Post.
20mm Post.



MB-141-G
Gold Plated
Binding Post.
20mm Post.



MB-142-G
Gold Plated
Binding Post.
30mm Post.



MB-143-G
Gold Plated
Binding Post.
25mm Post.



MB-144-G
Gold Plated
Binding Post.
40mm Post.



MB-145-G
Gold Plated
Binding Post.



MB-146-G
Gold Plated
Binding Post.
40mm Post.



MB-147-G
Gold Plated
Binding Post.



MB-148-G
Gold Plated
Binding Post.
10mm Post.



MB-149-G
Gold Plated
Binding Post.
10mm Post.



MB-150-G
Gold Plated
Binding Post.
50mm Post.



MB-151-G
Gold Plated
Binding Post.
10mm Post.



MB-152-G
Gold Plated
Binding Post.
30mm Post.





BINDING POSTS

MB-153-G
Gold Plated.
Binding Post.



MB-154-G
Gold Plated.
Binding Post.



MB-155-G
Gold Plated.
Binding Post.



MB-156-G
Binding Post.
To Binding Post



MB-157-G
Push Terminal



RCA PLUGS

MR-70-K



MR-71-G
Gold Plated
MR-71-B
MR-71-R
MR-71-K



MR-72-G
MR-72-B
MR-72-R
MR-72-K



MR-73-G
MR-73-K



MR-74-G





BANANA PLUGS

MT-180-G
Gold Plated.
Banana Plug.
Screw Type.
3mm/4mm



MT-181-G
Gold Plated.
Banana Plug.
Screw Type.
3mm/4mm



MT-182-G
Gold Plated.
Banana Plug.
Screw Type.
3mm/4mm



MT-183-G
Gold Plated.
Banana Plug.
Screw Type.
3mm/4mm



MT-184-G
Gold Plated.
Banana Plug.
Screw Type.
3mm/4mm



MT-185-G
Gold Plated.
Banana Plug.
Screw Type.
3mm/4mm



MT-186-G
Gold Plated.
Banana Plug.
Crimp Type.
3mm/4mm



MT-187-G
Gold Plated.
Banana Plug.
Crimp Type.
3mm/4mm



MT-188-G
Gold Plated.
Banana Plug.
Crimp Type.
3mm/4mm



MT-189-G
Gold Plated.
MT-189-B
Black Plated
Lock-in Banana Plug
Screw Type.
3mm/4mm



MT-190-G
Gold Plated.
Banana Plug.
Screw Type.
3mm/4mm



MT-191-G
Gold Plated.
Banana Plug.
Screw Type.
3mm/4mm



MT-192
Tin Nickel Plated
MT-192-G
Gold Plated.
Lock-In Banana Plug.
Screw Type.



MT-193-G
Gold Plated
Right Angle.
Banana Plug.



MT-194-G
Gold Plated.
MT-194-N
Nickel Plated.
Banana Plug.
Crimp Type.



MT-195-G
Gold Plated.
MT-195-N
Nickel Plated.
Banana Plug.
Screw Type.



MT-196-G
Gold Plated.
MT-196-N
Nickel Plated.
Dual Banana Plug.
Screw Type.



HOME



BANANA PLUGS

MT-197-G
Gold Plated



MT-198-G
Gold Plated



MT-199-G
Gold Plated
Solder Type



TIP PLUGS

MT-201-G
Gold Plated.
Tip Plug.
Crimp Type.



MT-202-G
Gold Plated.
Tip Plug.
Crimp Type.



MT-203-G
Gold Plated.
Tip Plug.
Crimp Type.



MT-204-G
Gold Plated.
Tip Plug.
Crimp Type.



MT-205-G
Gold Plated.
Tip Plug.
Crimp Type.
4 m/m



MT-206-G
Gold Plated.
Tip Plug.
Crimp Type.
6m/m



MT-207-G
Gold Plated.
Tip Plug.
For 3-4mm Cable.



MT-208-G
Gold Plated.
Spade Plug.



MT-209-G
Gold Plated.
Spade Plug.
Crimp Type.



MT-210
Tip Plug.



MT-211
Tip Plug.



MT-212
Tip Plug.



BANANA PLUGS

MT-230-G
Gold Plated.
Banana Plug. 2m/m
L=17m/m



MT-231-G
Gold Plated.
Banana Plug. 2m/m
L=22m/m



MT-232-G
Gold Plated.
Banana Plug. 2m/m
L=27m/m



HOME

Page 10

Page 12

Then I'll Receive Your Mail





BANANA PLUGS

MT-233-N
Nickel Plated.
Banana Plug.
Solder Type.
MT-233-G
Gold Plated.



MT-234-G
Gold Plated.
MT-234-N
Nickel Plated.
Banana Plug.
Solder Type.



MT-235-G
Gold Plated.
MT-235-N
Nickel Plated.
Banana Plug.
Screw Type.



MT-236-G
Gold Plated.
MT-236-N
Nickel Plated.
Banana Plug.
Screw Type.



MT-237-G
Gold Plated.
MT-237-N
Nickel Plated.
Banana Plug.
Solder Type.



MT-238-G
Gold Plated.
MT-238-N
Nickel Plated.
Banana Plug.
Solder Type.



MT-239-G
Gold Plated.
MT-239-N
Nickel Plated.
Banana Plug.
Solder Type.



MT-240-G
Gold Plated.
MT-240-N
Nickel Plated.
Banana Plug.
Screw Type.



MT-241-G
Gold Plated.
MT-241-N
Nickel Plated.
Banana Plug.
Solder Type.



MT-242-G
Gold Plated.
MT-242-N
Nickel Plated.
Banana Plug.
Solder Type.



MT-243-G
Gold Plated.
MT-243-N
Nickel Plated.
Banana Plug.
Solder Type.



MT-244-G
Banana Plug.
Screw Type.



MT-245
Bnc Jack
Banana Plug.



MT-246
Bnc Jack To
Dual Banana Plug.



MT-247
Bnc Male To
Dual Banana Plug.



MT-248
Ic Clip L=40mm



MT-249
Ic Clip L=57mm.



MT-250
Ic Clip L=90mm



HOME



BATTERY CLAMP

BC-10 (+or- indicator)



BC-20 (+or- indicator)



BC-30 (+or- indicator)



BC-40 (+or- indicator)



BC-50



BC-60



BC-70



IN-LINE FUSE HOLDER.

EWF-48N



EWF-04
EWF-08



EWF-040C
EWF 080C





PUSH TERMINAL

MPT-261
2P Push Terminals-W/Base.



MPT-262
4P Push Terminals-4m/m



MPT-263
2P Push Terminals-W/Base.



MPT-264
4P Push Terminals P.C.B. Type



MPT-265
4P Push Terminals.
Solder Type



MPT-266
4P Push Terminals.



MPT-267
2P Push Terminals.



MPT-268
3P Push Terminals.



MPT-269
4P Push Terminals.



MPT-270
5P Push Terminals.



MPT-271A-04



MPT-271
6P Push Terminals.



MPT-272
8P Push Terminals.



MPT-273
2P Push Terminals.



MPT-274
4P Push Terminals.



MPT-275
4P Push Terminals.



MPT-276
8P Push Terminals.

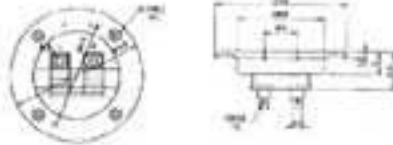


HOME



PUSH TERMINAL BOARDS

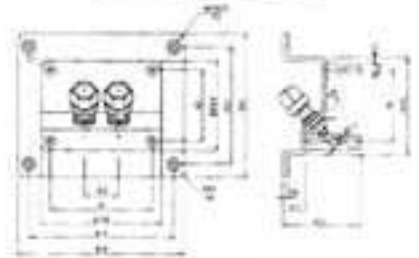
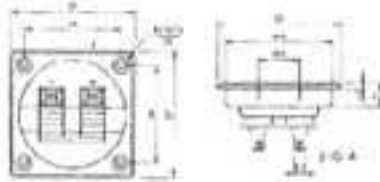
MPT-277
2P Push Terminal Boards
W/Round Panel.



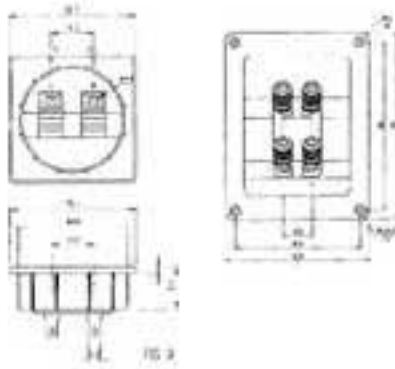
MPT-282-N
MPT-282-G
2P Screw Terminal Boards



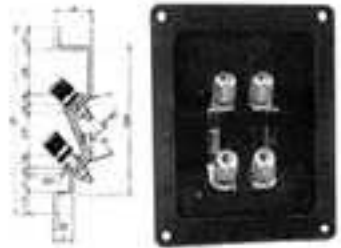
MPT-278
2P Push Terminal Boards
W/Round Panel.



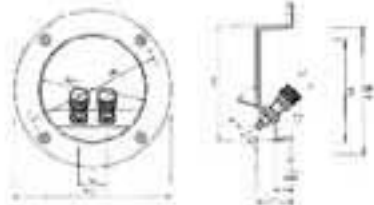
MPT-279
2P Push Terminal Boards
W/Round Panel.



MPT-283 G
4P Screw Terminal Boards



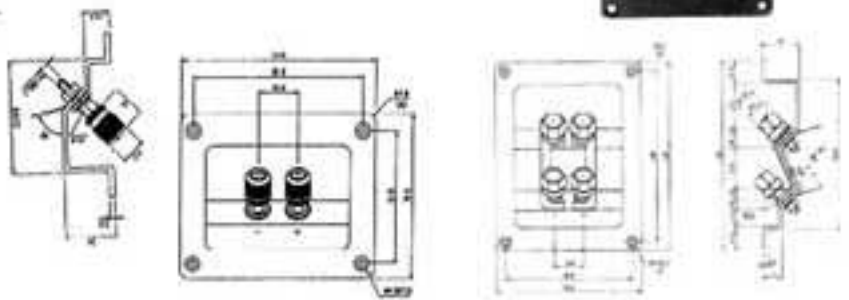
MPT-280-N
MPT-280-G
2P Screw Terminal Boards



MPT-284-N
MPT-284-G
4P Screw Terminal Boards



MPT-281-G
2P Screw Terminal Boards



NEW

MPT-130BS-2G*4



MPT-131BS-2G*4





PLUGS

MP-301-G(GOLD)

(A)Mono
(B)Stereo
Chrome Handle.

MP-301-B Black

MP 302-R TinNickel



MP-302-G

(A)Mono
(B)Stereo
Black Handle.

MP-302-B Black

MP-302-R TinNickel



MP-303-G

(A)Mono
(B)Stereo
Paint Resprayed
Handle.

MP-303P

Paint Resprayed

MP-303R

Tin Nickel



MP-304

6.35mm
Mono Phone Plug.

MP-304 ST

6.35mm
Stereo Phone Plug.



MP 305AA

6.35mm
Mono Phone Plug.



MP-306

6.35mm
Mono Phone Plug.



MP-307

(A)Mono
(B)Stereo
6.35mm Plug
Metal Type.



MP-308

MP-308S(W/Spring)

6.35mm Mono Plug
Metal Type.



MP-309

MP-309S(W/Spring)

6.35mm Stereo Plug
Metal Type.



MP-310

6.35mm
Mono Phone Plug.



MP-311

6.35mm Stereo Plug.



MP-312

6.35mm
Mono Plug.
Plastic Handle



MP-313

6.35mm
Stereo Plug.
Plastic With Boot.



MP-314

MP-314S(W/Spring)

3.5mm Mono Plug
Metal Type.



MP-315

MP-315S(W/Spring)

3.5mm Stereo Plug
Metal Type.



MP-316

3.5mm Mono Plug



MP-317

3.5mm Stereo Plug



MP-318

3.5mm Mono Plug
Plastic With Boot.



MP-319

3.5mm Stereo Plug
Plastic With Boot.



MP-320

2.5mm Mono Plug



MP-321

2.5mm Stereo Plug



MP-322

2.5mm Stereo Plug

MP-322S

2.5mm Mono Plug
Plastic With Boot.



HOME



PLUGS

MP-323
3.5mm Mono Plug
Right Angle.



MP-324
3.5mm Stereo Plug
Right Angle.



MP-325
6.35mm Mono Plug
Right Angle.(Plastic)



MP-326
6.35mm Stereo Plug
Right Angle.(Plastic)



MP-327
6.35mm Mono Plug
Right Angle.(Metal)



MP-328
6.35mm Stereo Plug
Right Angle.(Metal)



MP-300-G
Mono Plug 90°



ROUND SHAPE

MP-329

5.5X2.1X9mm

MP-329L

5.5x2.1x14mm

MP-330

5.5X2.5X9mm

MP-330L

5.5X2.5X14mm



MP-329J In Line Jack 2.1mm

MP-330J In Line Jack 2.5mm



MP-331

3.5X1.3X9mm

MP-332

3.8X1.1X9mm



RIGHT ANGLE

MP-333

5.5X2.1X9mm

MP-333L

5.5X2.1X14mm

MP-334

5.5X2.5X9mm

MP-334L

5.5X2.5X14mm



MP-335

3.5X1.3X9mm

MP-336

3.8X1.1X9mm



HEXAGON SHAPE

MP-337

5.5X2.1X9mm

MP-337L

5.5X2.1X14mm

MP-338

5.5X2.5X9mm

MP-338L

5.5X2.5X14mm



MJ-337J In Line Jack 2.1mm

MJ-338J In Line Jack 2.5mm



MP-339

6.3X3.0X9mm






JACKS

MJ-340
6.35mm Mono Jack
Metal Type.
MJ-341
6.35mm Stereo Jack
Metal Type.



MJ-342
6.35mm Mono Jack
Plastic With Boot.



MJ-343
6.35mm Stereo Jack
Plastic With Boot.

MJ-344
6.35mm Mono Jack
MJ-345
6.35mm Stereo Jack



MJ-346
3.5mm Mono Jack.
MJ-347
3.5mm Stereo Jack.
MJ-348
2.5mm Mono Jack.
MJ-349
2.5mm Stereo Jack.



MJ-350
3.5mm Mono Jack.
MJ-351
3.5mm Stereo Jack.
MJ-352
2.5mm Mono Jack.
MJ-353
2.5mm Stereo Jack.



MJ-354
3.5mm Mono Jack.
MJ-355
3.5mm Stereo Jack.
MJ-356
2.5mm Mono Jack.
MJ-357
2.5mm Stereo Jack.



MJ-454
Closed circuit (3P)
MJ-455
Open circuit (5P)
3.5mm Mono Phone Jack



MJ-456
Closed circuit (3P)
MJ-457
Open circuit (2P)
2.5mm Mono Phone Jack



MJ-458
6.35mm Jack Stereo
Closed circuit.



MJ-459
6.35mm Jack Stereo
Open circuit.



MJ-460
6.35mm Jack Mono
Closed circuit.



MJ-461
6.35mm Jack Mono
Open circuit.



STEREO TYPE
MJ-462
Closed circuit (6P)
MJ-463
Open circuit (3P)



MONO TYPE
MJ-464
Closed circuit (4P)
MJ-465
Open circuit (2P).



MJ-466
3.5mm Mono Jack.
MJ-467
3.5mm Stereo Jack.
MJ-468
2.5mm Mono Jack.
MJ-469
2.5mm Stereo Jack.



MJ-470
3.5mm Moulding Stereo Jack.
MJ-471
3.5mm Moulding Mono Jack.
MJ-472
2.5mm Moulding Stereo Jack.
MJ-473
2.5mm Moulding Mono Jack.





JACKS

MJ-480 (Dia 2.1mm)
MJ-481 (Dia 2.5mm)
DC Chassis Jack



MJ-482
Closed Type (3P)
MJ-483
Open Type (2P)
2.1mm DC Jack.



MJ-484
Closed Type (3P)
MJ-485
Open Type (2P)
2.5mm DC Jack.



MJ-486 (2.0mm)
MJ-487 (2.5mm)
P.C.B. Layout (Bottom View)



MJ-488 (2.0mm)
MJ-489 (2.5mm)



MJ-490 (2.0mm)
MJ-491 (2.5mm)
P.C.B. Layout (Bottom View)



MJ-492
3.5mm Jack.
MJ-493
3.5mm Stereo Jack.



MJ-494
3P Stereo Jack For
P.C.B. Board.
MJ-495
5P Stereo Jack For
P.C.B. Board.



MJ-496
3.5mm Phone Jack.



MJ-497
2.5mm P.C.B. Type.
MJ-498
3.5mm P.C.B. Type.



MJ-499
2.5mm Jack.
MJ-500
2.5mm Stereo Jack.



MJ-501
2.5mm Phone Jack.



MJ-502 Coaxial Jack



MJ-503 Coaxial Jack



MJ-504
DC Jack Closed Type



MJ-505
3.5mm P.C.B. Jack



MJ-506
3.5mm Jack



ADCON

ADAPTOR



6.35v Stereo Plug	A	P/no
	3.5v Mono	EA-361
	6.35 Mono	EA-362
	3.5 Stereo	EA-363
	6.35 Stereo	EA-364

EA-387
6.35mm Plug Mono To
2XRCA Phone Jack Plastic



6.35v Stereo Plug	A	P/no
	2x3.5v Mono	EA-365
	2x6.35 Mono	EA-366
	2x3.5 Stereo	EA-367
	2x6.35 Stereo	EA-368

EA-388
6.35mm Plug Stereo To
2XRCA Phone Jack Plastic.



6.35v Mono Plug	A	P/no
	3.5v Mono	EA-369
	6.35 Mono	EA-370
	3.5 Stereo	EA-371
	6.35 Stereo	EA-372

EA-389
6.35mm Plug,
Mono To RCA Phone Jack Plastic.
EA-390
6.35mm Plug,
Stereo To RCA Phone Jack.



6.35v Mono Plug	A	P/no
	2x3.5v Mono	EA-373
	2x6.35 Mono	EA-374
	2x3.5 Stereo	EA-375
	2x6.35 Stereo	EA-376

EA-391
6.35mm Jack,
Mono To 6.35mm Jack, Mono.
EA-392
6.35mm Jack,
Stereo To 6.35mm Jack, Stereo.



6.35v Mono Plug	A	P/no
	5P Plug 180"	EA-377
	5P Plug 300"	EA-378
	5P Jack 180"	EA-379
	5P Jack 300"	EA-380

EA-393
RCA Phone Plug To
2XRCA Phone Jack Plastic.



RCA Phone Plug	A	P/no
	2.5v Mono	EA-381
	3.5 Mono	EA-382
	6.35 Mono	EA-383
	2.5 Stereo	EA-384
	3.5 Stereo	EA-385
	6.35 Stereo	EA-386

EA-394
RCA Phone Jack To
2XRCA Phone Jack Plastic.



6.35v Stereo Plug to	A	B
	2.5v Stereo Jack	EA-395
	3.5v Stereo Jack	EA-396





ADCON



ADAPTORS



A

	A	P/no.
3.5 φ Mono Plug	2.5 φ Mono	EA-401
	3.5 Mono	EA-402
	6.35 Mono	EA-403
	2.5 Stereo	EA-404
	3.5 Stereo	EA-405
	6.35 Stereo	EA-406



A

	A	P/no.
3.5 φ Stereo Plug	2.5 φ Mono	EA-407
	3.5 Mono	EA-408
	6.35 Mono	EA-409
	2.5 Stereo	EA-410
	3.5 Stereo	EA-411
	6.35 Stereo	EA-412



A

	A	P/no.
3.5 φ Stereo Plug	2 × 3.5 φ Jack, Mono	EA-413
	2 × 6.35 Jack, Mono	EA-414
	2 × 3.5 Jack, Stereo	EA-415
	2 × 6.35 Jack, Stereo	EA-416



A

	A	P/no.
3.5 φ Mono Plug	2 × 3.5 φ Jack, Mono	EA-417
	2 × 3.5 Jack, Stereo	EA-418
	2 × 6.35 Jack, Stereo	EA-419



A

	A	P/no.
3.5 φ Mono Plug	5P Plug 180°	EA-420
	5P Plug 360°	EA-421
	5P Jack 180°	EA-422
	5P Jack 360°	EA-423



B

A	B	P/no.
5P Plug 180° (360°)	5P Plug 180° (360°)	EA-424
5P Plug 180° (360°)	5P Jack 180° (360°)	EA-425
5P Jack 180° (360°)	5P Jack 180° (360°)	EA-426

EA-427
3.5mm Plug Mono To 2XRCA Phone Jacks Plastic.



EA-428
3.5mm Plug Stereo To 2XRCA Phone Jacks Plastic.



EA-429 (Plastic)
3.5mm Plug, Mono To RCA Phone Jacks.

EA-430 (Plastic)
3.5mm Plug, Stereo To RCA Phone Jacks.



EA-431
RCA Jack To 5P Plug Plastic. (180/360)



EA-432
3.5mm Plug, Mono To PAL Plug Plastic



EA-433
3.5mm Plug, Mono To PAL Jack Plastic



EA-434
5P DIN Plug To 3.5mm Stereo Jack.

EA-435
5P DIN Plug To 6.35mm Stereo Jack.



HOME

ADCON



ADAPTORS



	A	P/no.
2.5 φ Mono Plug	3.5 φ Mono	EA-436
	6.35 Mono	EA-437
	3.5 Stereo	EA-438
	6.35 Stereo	EA-439



	A	P/no.
2.5 φ Stereo Plug	3.5 φ Mono	EA-440
	6.35 Mono	EA-441
	3.5 Stereo	EA-442
	6.35 Stereo	EA-443



	A	P/no.
6.35 φ Stereo Plug	SP Plug 180°	EA-444
	SP Plug 360°	EA-445
	SP Jack 180°	EA-446
	SP Jack 360°	EA-447

EA-448
1/4" Stereo Plug To Double RCA Jack.
EA-449
1/4" Mono Plug To Double RCA Jack.



EA-450
3.5mm Mono Plug To Double RCA Jack
EA-451
3.5mm Stereo Plug To Double RCA Jack



EA-452
RCA Jack To Double RCA Jack.
EA-453
RCA Plug X 2RCA Jack.

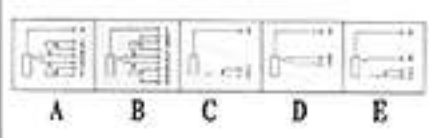


EA-453A
2RCA Plugs To 3.5mm Jack



JACKS

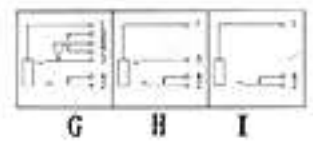
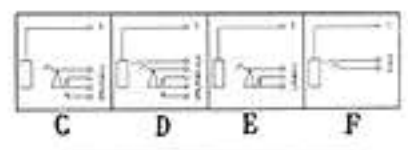
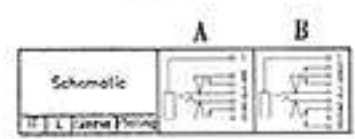
MJ-03-A To e



MJ-04-A To I



MJ-05-A To I





MICROPHONE CONNECTORS



Part. No.	
MPC-601	3P
	4P
	5P
	6P
	7P



Part. No.	
MPJ-602	3P
	4P
	5P
	6P
	7P



Part. No.	
MPC-603	3P
	4P
	5P
	6P
	7P



Part. No.	
MPJ-604	3P
	4P
	5P
	6P
	7P



Part. No.	
MPC-605	3P
	4P
	5P
	6P
	7P



Part. No.	
MPJ-606	3P
	4P
	5P
	6P
	7P



Part. No.	
MPC-607	3P
	4P
	5P
	6P
	7P



Part. No.	
MPJ-608	3P
	4P
	5P
	6P
	7P



Part. No.	
MPC-609	3P
	4P
	5P
	6P
	7P



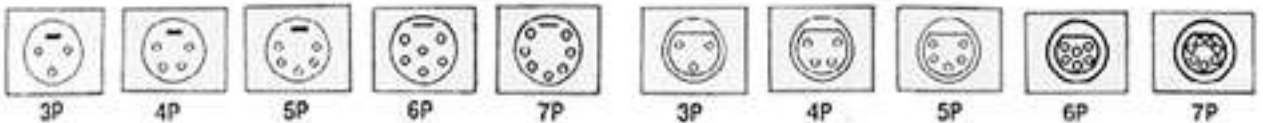
Part. No.	
MPJ-610	3P
	4P
	5P
	6P
	7P



Part. No.	
MPC-611	3P
	4P
	5P
	6P
	7P



Part. No.	
MPJ-612	3P
	4P
	5P
	6P
	7P





MICROPHONE CONNECTORS

MPJ-613
3P Mic Female Connector.



MPJ-614
3P Mic Female Connector.



MPJ-615
3P Mic Female Connector, P.C.B. Layout.



MPJ-616
3P Mic Male Connector.



MPJ-617
3P Mic Female Connector.



MPC-618
3P Panel Mount Male Connector.



MPJ-619
3P Panel Mount Female Connector.



MPJ-620
3P Panel Mount Male Plug, P.C.B. Layout



MPJ-621
3P Panel Mount Female Jack, P.C.B. Layout



MPJ-622
4P Panel Mount Female Jack.



MPC-625-4 Connector Plug,
MPC-625-5
MPC-625-7



4P	5P	7P	8P

MPJ-626-4 Connector Jack,
MPJ-626-5
MPJ-626-7



4P	5P	7P	8P

MINI MICROPHONE
EW-2301 3P-5P
In-Line Plug



1999年8月後生産

EW-2305 3P-5P
In-Line Jack



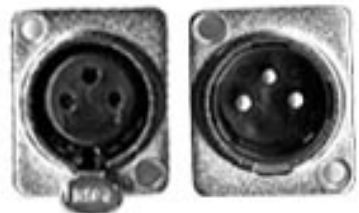
EW-2310 3P-5P
Jack Solder Panel



EW-2315 3P-5P
Plug Solder Panel



EW-2316 3p
MALE/FEMALE





METAL CONNECTOR

MPC-627-2P TO 8P
Metal Connector.



MPC-628-2P TO 8P



PLUG

8P	7P	6P	5P	4P	3P	2P

MPJ-629-2P TO 8P
Metal Connector.



MPJ-630-2P TO 8P
Right Angle.



MPJ-631-2P TO 8P
Right Angle.



SOCKET

8P	7P	6P	5P	4P	3P	2P

XLR MICROPHONE MATCHING TRANSFORMERS

MPA-632
MPA-633
MAP-634

A	B	Pin
3 Pin Microphone Plug	3 Pin Microphone Plug	MPA-632
3 Pin Microphone Jack	3 Pin Microphone Jack	MPA-633
3 Pin Microphone Plug	3 Pin Microphone Jack	MPA-634



MPA-635
MPA-636

6 Pin Mono Plug (STEREO)	A	Pin
	3 Pin Microphone Plug	MPA-635(3T)
	3 Pin Microphone Jack	MPA-636(3T)



MPA-637
MPA-638

6 Pin Mono Jack (STEREO)	A	Pin
	3 Pin Microphone Plug	MPA-637(3T)
	3 Pin Microphone Jack	MPA-638



MPA-639
MPA-640

RCA Plug	A	Pin
	3 Pin Microphone Plug	MPA-639
	3 Pin Microphone Jack	MPA-640



MPA-641
MPA-642

RCA Jack	A	Pin
	3 Pin Microphone Plug	MPA-641
	3 Pin Microphone Jack	MPA-642



MPA-643
MPA-644

RCA Jack	A	Pin
	3 Pin Microphone Plug	MPA-643
	3 Pin Microphone Jack	MPA-644



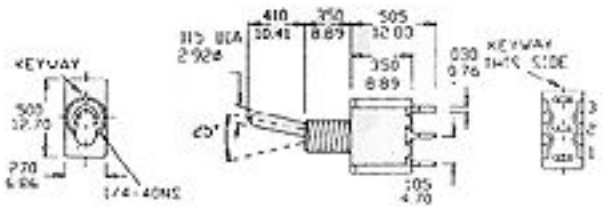


MINIATURE TOGGLE SWITCH

SPDT
(A) Solder
(B) P.C.B. Layout



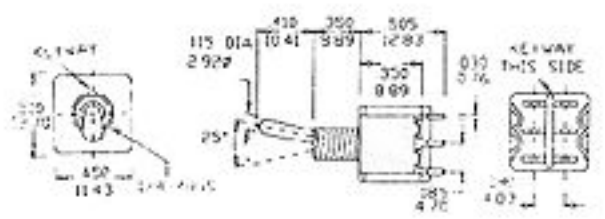
Model NO.	Switching Position	
	ON	OFF
MS-01	ON	NONE ON
MS-02	ON	NONE (ON)
MS-03	ON	OFF ON
MS-04	(ON)	OFF (ON)
MS-05	ON	OFF (ON)
Term. Conn.	2-3	OPEN 2-1



DPDT
(A) Solder
(B) P.C.B. Layout



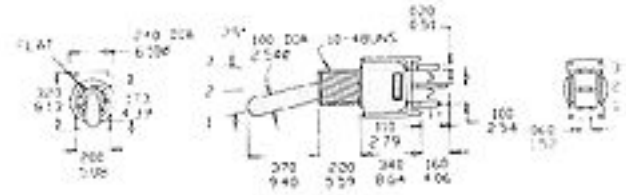
Model NO.	Switching Position	
	ON	OFF
MS-06	ON	NONE ON
MS-07	ON	NONE (ON)
MS-08	ON	OFF ON
MS-09	(ON)	OFF (ON)
MS-10	ON	OFF (ON)
Term. Conn.	2-3	OPEN 2-1



SPDT



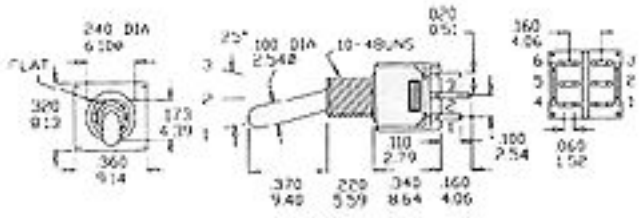
Model NO.	Switching Position	
	ON	OFF
MS-11	ON	NONE ON
MS-11A	ON	OFF ON
MS-11B	ON	NONE (ON)
Term. Conn.	2-3	OPEN 2-1



DPDT



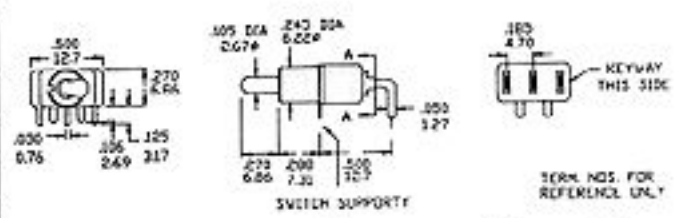
Model NO.	Switching Position	
	ON	OFF
MS-12	ON	NONE ON
MS-12A	ON	OFF ON
MS-12B	ON	NONE (ON)
Term. Conn.	2-3	OPEN 2-1



SPDT



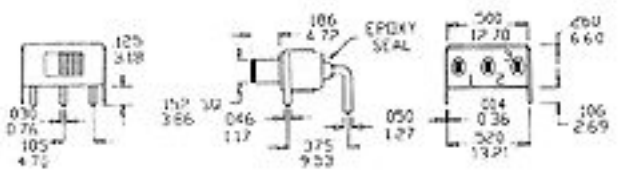
Model NO.	Switching Position	
	ON	OFF
MS-13	ON	NONE ON
MS-13A	ON	OFF ON
MS-13B	ON	NONE (ON)
Term. Conn.	2-3	OPEN 2-1



SPDT



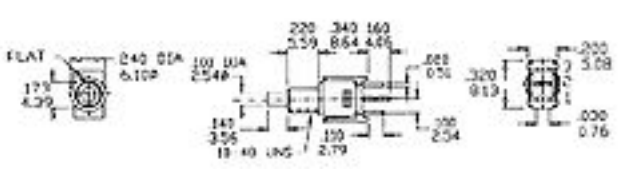
Model NO.	Switching Position	
	ON	OFF
MS-14	ON	NONE ON
Term. Conn.	2-1	OPEN 2-3



SPST



Model NO.	Switching Position	
	ON	OFF
MS-15A	ON	ON
MS-15B	OFF	ON



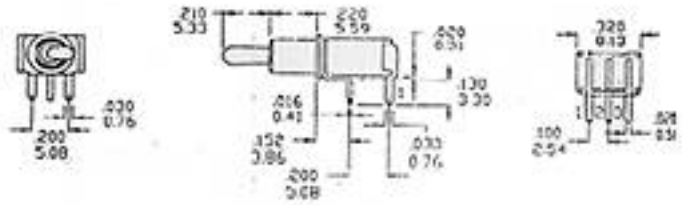


SUB-MINIATURE TOGGLE SWITCHES

SPDT



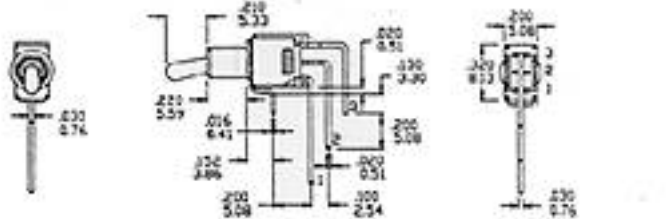
MODEL NO	TYPE		
MS-16	ON	NONE	ON
MS-16A	ON	OFF	ON
MS-16B	ON	NONE	(ON)
Term Comm	2-3	OPEN	2-1



SPDT



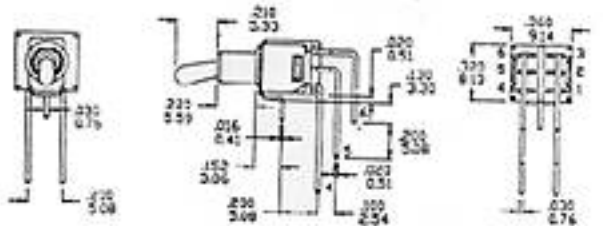
MODEL NO	TYPE		
MS-18	ON	NONE	ON
MS-18A	ON	OFF	ON
MS-18B	ON	NONE	(ON)
Term Comm	2-3	OPEN	2-1



DPDT



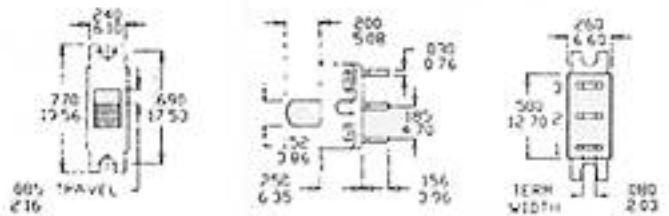
MODEL NO	TYPE		
MS-17	ON	NONE	ON
MS-17A	ON	OFF	ON
MS-17B	ON	NONE	(ON)
Term Comm	2-3	OPEN	2-1 5-4



SPDT



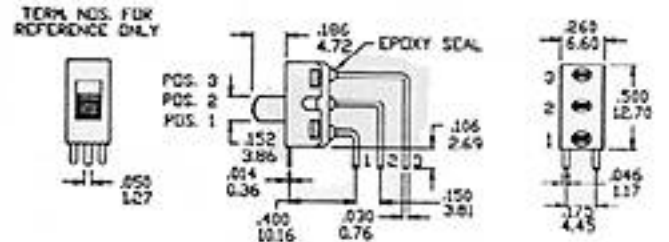
MODEL NO	TYPE		
MS-19	ON	NONE	ON
Term Comm	2-1	OPEN	2-3



SPDT



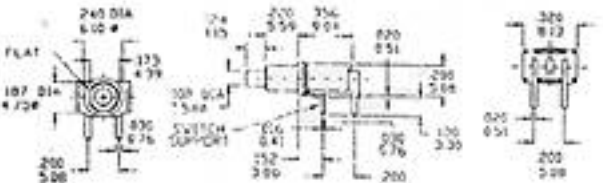
MODEL NO	TYPE		
MS-20	ON	NONE	ON
Term Comm	2-1	OPEN	2-3



SPDT



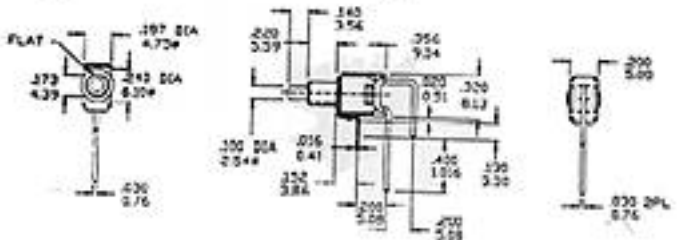
MODEL NO	TYPE
MS-21A	ON MOM



SPDT



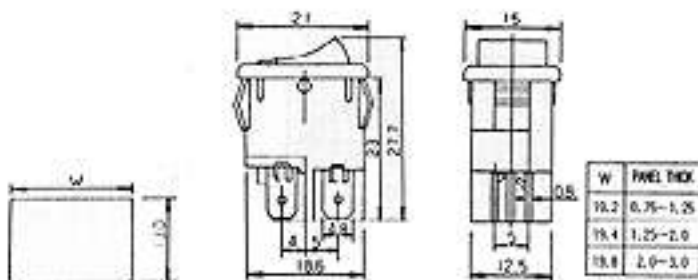
MODEL NO	TYPE
MS-21B	OFF MOM
MS-22B	ON MOM
Term Comm	2-1 2-3



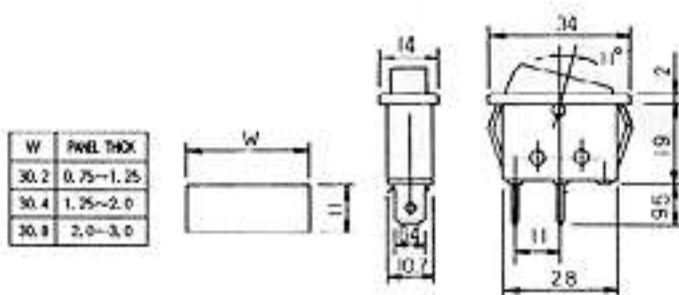


ROCKER SWITCH

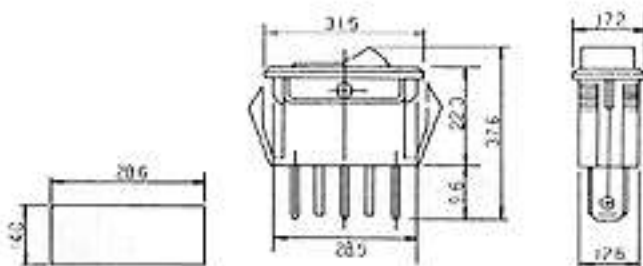
MS-40
 MS-40A/2P on-off
 MS-40B/4P on-off
 MS-40L/3P illuminated
 MS-40L/4P illuminated
 Rating: 10A 125VAC
 6A 250VAC



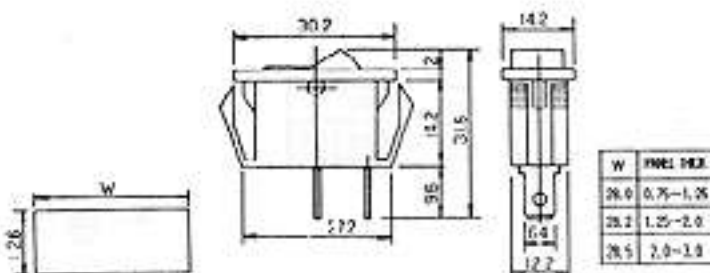
MS-41
 MS-41A/2P on-off
 MS-41B/3P on-off-on
 MS-41L/3P illuminated
 Rating: 16A 125VAC
 10A 250VAC



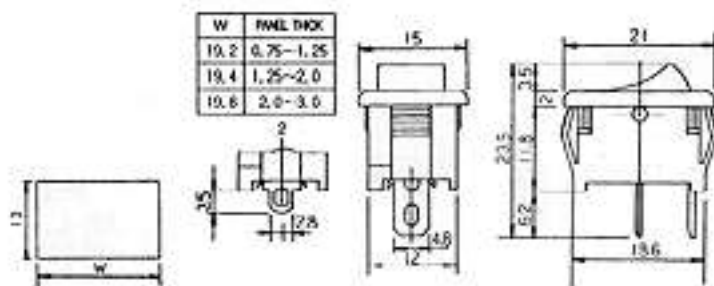
MS-42
 MS-42A/2P on-off
 MS-42B/3P on-on
 MS-42L/3P illuminated
 Rating: 16A 125VAC
 10A 250VAC



MS-43
 MS-43A/2P on-off
 MS-43B/3P on-on
 MS-43L/3P illuminated
 Rating: 10A 125VAC
 6A 250VAC



MS-44
 MS-44A/2P on-off
 MS-44B/3P on-on
 MS-44D/2P (on)-off
 MS-44E/2P on-(off)
 MS-44E/3P on off on
 MS-44L/LED (RED, GREEN)
 Rating: 10A 125VAC
 6A 250VAC





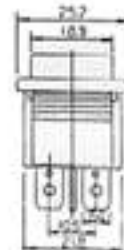
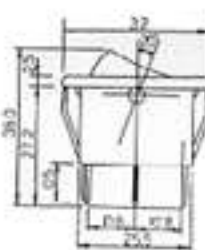
ROCKER SWITCH

MS-45

MS-45RA(45A)/4P on-off
 MS-45RB(45B)/6P on-on
 MS-45RC(45C)6P on-off-on
 MS-45RD(45D)/4P (on)-off
 MS-45RL(45L)/4P illuminated
 Rating: 10A 125/250VAC
 Mounting Hole: 22X 28 m/m
 R Type Rocker



W	PANEL THICK
28.0	0.75~1.25
25.2	1.25~2.0
25.7	2.0~3.0

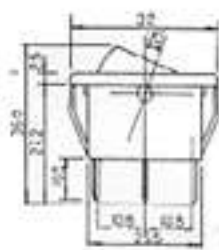


MS-46

MS-46FA(46-1A)/4P on-off
 MS-46FB(46-1B)/6P on-on
 MS-46FC(46-1C)/6P on-off-on
 MS-46FD(46-1D)/4P (on)-off
 MS-46FL(46-1L)/4P illuminated
 MS-46FM(46-1M)/6P on-off-(on)
 Rating: 10A 125/250VAC
 Mounting Hole: 22X30m/m
 F Type Rocker



W	PANEL THICK
30.0	0.75~1.25
30.2	1.25~2.0
30.6	2.0~3.0

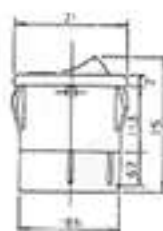
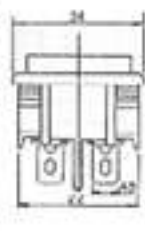


MS-47

UL E107171
 CSA LR81727-2
 MS-47PA/4P on-off
 MS-47PB/6P on-on
 Rating: 10A 125VAC
 6A 250VAC
 Terminal Options:
 1. Solder Ter.
 2. Quick Ter.
 3. PC Ter.

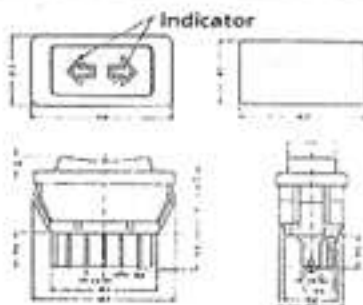


W	PANEL THICK
18.2	0.75~1.25
18.4	1.25~2.0
18.8	2.0~3.0



MS-48

MS-48L(With lamp)

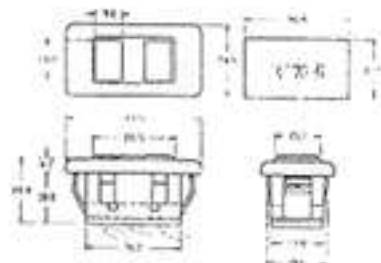


MS-49 3P(ON)-OFF-(ON)

(for power window of automobile)
 Rating: 25A 14VDC



NO.	W	W	W
1	1.25	1.25	1.25
2	1.25	1.25	1.25
3	1.25	1.25	1.25
4	1.25	1.25	1.25
5	1.25	1.25	1.25
6	1.25	1.25	1.25





PUSHBUTTON SWITCHES

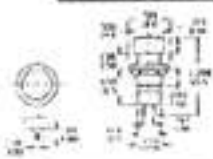
SPECIFICATION:

Proof voltage: 1500VAC Circuitry: S.P.S.T.
 Contact resistance: 20m (max.) Contracting : 1A 250VAC
 Electrical life: 50,000(min.) 3A 125VAC
 Mechanical: 100,000(min.) Insulation Resistance: 100M

MS-50A
MS-50B



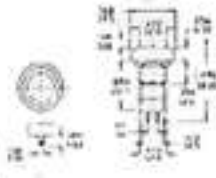
Model No.	TYPE
MS-50A	OFF-ON
MS-50B	OFF-(ON)



MS-54A
MS-54B



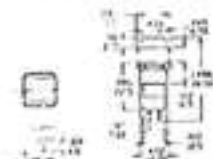
Model No.	TYPE
MS-54A	OFF-ON
MS-54B	OFF-(ON)



MS-51A
MS-51B



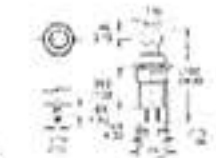
Model No.	TYPE
MS-51A	OFF-ON
MS-51B	OFF-(ON)



MS-55A
MS-55B



Model No.	TYPE
MS-55A-2P	(ON) OFF
MS-55B-2P	ON (OFF)



MS-52A
MS-52B



Model No.	TYPE
MS-52A	OFF-ON
MS-52B	OFF-(ON)



MS-56A
MS-56B



Model No.	TYPE
MS-56A	OFF-(ON)
MS-56B	ON (OFF)



MS-53A
MS-53B



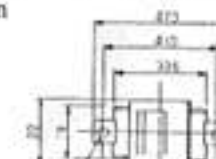
Model No.	TYPE
MS-53A	OFF-ON
MS-53B	OFF-(ON)



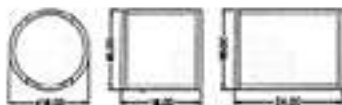
MS-57
MS-57A/4P on-off
MS-57B/6P on-on



Model No.	TYPE
MS-57A-4P	ON-OFF
MS-57B-6P	ON-ON



MS01P-40



round C square S rectangle R Indicator ON 1A1B OFF-(ON) 2A2B OFF-ON





AC-110



AC SOCKET

AC-101



AC-102



AC-103



AC-104



AC-105



AC-106



AC-107



AC-108



AC-109



AC-111



AC-112



AC-113



AC-114



AC-115



AC-116



AC-117



AC-118



**AC ADAPTOR
HOLDER 110V-220V**

AC-119
110V-220V



AC-120
220V-110V



AC-121



AC-122
110V-220V



AC-123
110V-110V
220V



AC-124
110V-220V(4.8X19m/m)
220V



AC-125
110V-220V
220V



AC-126
110V-110V
220V





TERMINALS

MJ-510
1P RCA Jack Terminal Board



MJ-511
1P RCA Jack Terminal Board



MJ-513
(A) 2P RCA Jack Terminal Board
(B) 2P Wire Wrapping Type Pin Jack



MJ-514
(A) 4P RCA Jack Terminal Board
(B) 4P Wire Wrapping Type Pin Jack



MJ-515
(A) 4P RCA Jack Terminal Board
(B) 4P Wire Wrapping Type Pin Jack



MJ-516
(A) 6P RCA Jack Terminal Board
(B) 6P Wire Wrapping Type Pin Jack



MJ-517
(A) 8P RCA Jack Terminal Board
(B) 8P Wire Wrapping Type Pin Jack



MJ-518
PC Type Pin Jack 2P



MJ-519
PC Type Pin Jack 2P



MJ-520
PC Type Pin Jack 4P



MJ-521
PC Type Pin Jack 6P



MJ-522
PC Type Pin Jack 8P



MJ-523
PC Type Pin Jack 1P



MJ-524
PC Type Pin Jack 3P



MJ-011-3
"US" Type Lug Terminal (1L-2P)

MJ-011-4
"US" Type Lug Terminal (1L-3P)

MJ-011-5
"US" Type Lug Terminal (1L-4P)

MJ-011-7
"US" Type Lug Terminal (2L-5P)

MJ-011-8
"US" Type Lug Terminal (2L-6P)

MJ-011-9
"US" Type Lug Terminal (2L-7P)

MJ-011-10
"US" Type Lug Terminal (2L-8P)



MJ-012-2
2P Screw Terminal

MJ-012-3
3P Screw Terminal

MJ-012-4
4P Screw Terminal





TV COAXIAL.

MP-531-N NICKEL
MP-531-G GOLD
MP-531-R TIN NICKEL
9.5mm TV Plug, Metal



MJ-532-N NICKEL
MJ-532-G GOLD
MJ-532-R TIN NICKEL
9.5mm TV Jack, Metal



MP-533-N NICKEL
MP-533-G GOLD
9.5mm TV Plug, Metal



MJ-534-N NICKEL
MJ-534-G GOLD
9.5mm TV Jack, Metal



MP-535-N NICKEL
MP-535-G GOLD
Pal Plug To Pal Plug, Metal



MJ-536-N NICKEL
MJ-536-G GOLD
Pal Jack To Pal Jack, Metal



MP-537-N NICKEL
MP-537-G GOLD
Pal Jack To Pal Plug, Metal



MP-538
9.5mm TV Plug



MJ-539
9.5mm TV Jack



MP-540
9.5mm TV Plug



MJ-541
9.5mm TV Jack



MP-542
9.5mm TV Plug



MJ-543
9.5mm TV Jack



MP-544
9.5mm TV Plug



MJ-545
9.5mm TV Jack



MP-546
9.5mm TV Plug



MJ-547
9.5mm TV Jack



MP-548
9.5mm TV Plug, Right Angle



MJ-549
9.5mm TV Jack, Right Angle



MP-550
9.5mm TV Plug, Right Angle



MJ-551
9.5mm TV Jack, Right Angle



MP-552
Coaxial Inline Coupler



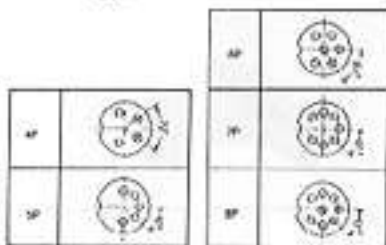


DIN PLUGS & JACKS

MD-015-4 TO 8P OR 13P
DIN PLUG WITH PLASTIC
HANDLE (4-8 PIN)



MD-016-4 TO 8P



MD-017-4 TO 8P



MD-018-4 TO 8P



MD-018-A-4 TO 8P OR 13P



MINI DIN PLUGS & JACKS

MD-019-4 TO 8



MD-019TN
MINI DIN 4P



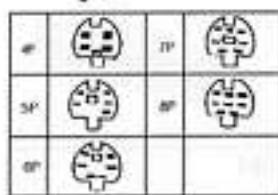
MINI DIN JACK
MD-020
4-8P



MD-021/4 TO 8P



MD-022/4-8P



MD-023
MINI DIN 4P-6P



MD-024
MINI DIN 4P-6P
MD-025-4P



MD-561
MD-561-9 (Molding)
MD-561 (Assembly)
Mini 9 pin DIN plug



MD-562
Movie Plug for Video
Camera(8 POL 360)



MD-563
Movie Jack for Video Camera(8 POL)



MD-564
2P Loudspeaker plug
Screw,Right Angle



MD-565
2P Loudspeaker Jack
Right Angle,Screw



MD-566
2P Loudspeaker Jack
Solder type
MD-566A
2P Loudspeaker Jack
Screw type



MD-567
2P Loudspeaker plug
Solder type
MD-567A
2P Loudspeaker plug
Screw type





P.L.C.C SOCKET



Part NO:PLM/D
1.M:SMT
2.D:DIP STRAIGHT
PLM-20,28,32,44,52,68,84 POSITION
PLD-20,28,32,44,52,68,84 POSITION

ADAPTOR MOLDING



EAM-0909MF
MINI DIN PLUG 9P
TO D-SUB 9P JACK



EAM-0606MF
MINI DIN PLUG 6P
TO DIN JACK 5P



EAA-1515 MF D-SUB 15P PLUG TO 15P JACK
MM 15P PLUG TO 15P PLUG
FF 15P JACK TO 15P JACK
EAA-2525 MF D-SUB 25P PLUG TO 15P JACK
MM 25P PLUG TO 25P PLUG
FF 25P JACK TO 25P JACK

1.27 MM CENTRONIC CONNECTORS

14,20,26,28,36,40,50,60,68,100 POSITION



DSC-14P-RS
HOOD MALE
IN BULK



DSE-14P
FEMALE CLIP BOARD



DSR-14P-(90°)
FEMALE RIGHT ANGLE

Page 38    Page 40

Then I'll Receive Your Mail 



FUSE HOLDERS

MF-571
FUSE holder for 5.2X20mm use



MF-572
FUSE holder for 6.4X30-32mm use



MF-573
FUSE holder for 6.4X30-32mm use



MF-574
FUSE HOLDER (USING FUSE 6.4X30 = 1



MF-575
FUSE HOLDER (USING FUSE 6.4X 30±1



MF-576A
1P FUSE BLOCK (USING FUSE 5.2X 20±1

MF-576B
1P FUSE BLOCK (USING FUSE 64X 30±1



MF-577A
MF-577B
(A)6.4m/m fuse clip
(B)5.2m/m fuse clip



MF-578 In-line Fuse Holder
30cm wire



MF-579 In-line Fuse Holder
30cm wire



MF-580 Agu Fuses
Glass Tube Type
MF-580AG
GOLD
Metal
(外製)



MF-581 Atc plug -In
Terminal Fuses 20m/m



MF-582 ATM plug -In
Terminal Fuses 30m/m



MF-583 Agu Fuses
Glass Tube Type
(1)20m/m
(2)30m/m



MF-584 Agc Fuses
100A,80A



Auto Cigarette Plug

MAC-585
Auto Cigarette Plug
may add fuse & Led Lamp



MAC-586
Auto Cigarette Plug
may add fuse



MAC-587
Auto Cigarette Plug
may add fuse



MAC-588
Auto Cigarette Plug
may add fuse



MAC-589
Auto Cigarette Plug



MAC-590
Auto Cigarette Plug



MAC-591
Auto Cigarette Plug



HOME



**AUTO CIGARETTE
SOCKET**

MAC-592
Cla. Inline Socket Plastic



MAC-593
Cla. Socket Metal Porcelain
Insulation
Inset-Lock type.



MAC-594
Cla. Socket Metal Porcelain
Insulation
Inset-Lock type.



MAC-595
Auto plug



MAC-596
Auto plug



MAC-597
Auto plug



MAC-600



MAC-601
Socket In-line



MAC-602 110V
MAC-603 220V
ADAPTORS DC TO AC 1A,0.5A



MAC-800
Power Socket
2XJack To Plug



MAC-801
3XJack To Plug



MAC-802
10ft Plug To Jack





Antenna Plug/Jack

MA-650
Auto Antenna Plug



MA-651
Auto Antenna Plug



MA-652
Auto Antenna Jack



MA-653
Auto Antenna Jack



MA-654
Auto Antenna Jack



Scart Plug

MA-660
21Pin Scart Plug-5.5m/m 8m/m 10m/m
Bulk



MA-661
21Pin Scart Plug



MA-662-IN
21 Pin Scart Plug with Din Socket
Bulk.w/o Cable



MA-663-OUT
21Pin Scart Plug with Din Socket
Bulk.w/o Cable



MA-664
21Pin Scart Jack



MA-665
21Pin Scart Jack



MA-666
21Pin Scart Jack





NEON LED INDICATOR

MN-701
Led Indicator Light 2V



MN-702
Led Indicator Light 2V



MN-703
Led Indicator Light 2V



MN-704
Neon Indicator Light 120V,220V



MN-705
Neon Indicator Light 120V,220V



MN-706
Neon Indicator Light 120V,220V



MN-707
Neon Indicator Light 120V,220V



MN-708
Neon Indicator Light 120V,220V



MN-709
Neon Indicator Light 120V,220V



MN-710
Neon Indicator Light 12V



MN-711
Neon Indicator Light 120V,220V



MN-712
Neon Indicator Light 120V,220V



MN-713
Neon Indicator Light 120V,220V



MN-714
Neon Indicator Light 120V,220V



MN-715
Neon Indicator Light 120V,220V



MN-716
Neon Indicator Light 120V,220V



MN-717
Neon Indicator Light 120V,220V



MN-718
Neon Indicator Light 120V,220V



MN-719
Neon Indicator Light 12V,24V



MN-720
Neon Indicator Light 120V,220V



MN-721
E-5 Screw Base
Indicator Light Holder



MN-722
E-10 Screw Base
Indicator Light Holder



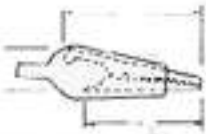
MN-723
E-10 Screw Base
Indicator Light Holder





CLIPS/TEST LEAD SETS

MC-751 (A:25MM, B:32MM)
 MC-752 (A:28MM, B:35MM)
 MC-753 (A:34MM, B:43MM)
 Alligator clip with vinyl boot



MC-754
 Alligator clip with molded handle



MC-755
 Alligator clip, A type
 MC-755A W/O SCREW



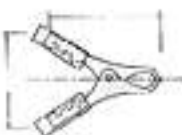
MC-756
 Alligator clip, A type
 MC-756A W/SCREW



MC-757
 Alligator clip, A type with handle
 MC-757A W/SCREW



MC-758 (L:94MM, W:56MM)50A
 MC-759 (L:55MM, W:40MM)15A
 MC-760 (L:70MM, W:45MM)30A
 Battery clip



MC-761
 Set of 10 small alligator clip
 MC-762
 Set of 20 small alligator clip



MC-763
 Set of 10 large alligator clip
 MC-764
 Set of 20 large alligator clip



MC-765
 Test lead set banana plug & clip
 3FT



MC-766
 Banana plug and molded handle
 3FT



MC-767
 Molded handle 3FT



MC-768
 Test lead set-banana plug & tip
 handle 3FT



MC-769
 Test lead set-pin tip type 3FT



MC-770
 Test lead set IC clip & adaptor for
 pin tip type (2m/m) 3FT



MC-771
 Test lead set-IC tip type 3FT



MC-772
 Test lead set IC clip Banana type
 (4m/m) 3FT



MC-773
 Test lead set IC clip Banana type
 (4m/m) 3FT



MC-774
 Test lead set-banana plug & tip
 handle 3FT



MC-775
 Test lead set-banana plug & tip
 handle 3FT With Clip





SOLDERLESS CABLE SERIES

MW-001A
BNC Male Solderless



MW-001B
Right Angle BNC Male



MW-001C
Right Angle BNC Male



MW-002A
BNC Female Solderless



MW-002B
Right Angle BNC Female



MW-002C
Right Angle BNC Female



MW-003A
F Male Solderless



MW-003B
Right Angle F Male



MW-003C
Right Angle F Male



MW-004A
F Quick Male Solderless



MW-004B
Right Angle F Quick Male



MW-004C
Right Angle F Quick Male



MW-005A
PAL Male Solderless



MW-005B
Right Angle PAL Male



MW-005C
Right Angle PAL Male





SOLDERLESS CABLE SERIES

MW-006A
PAL Female Solderless



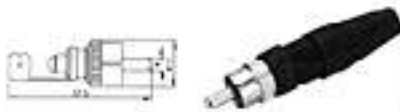
MW-006B
Right Angle PAL Female



MW-006C
Right Angle PAL Female



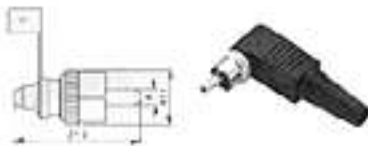
MW-007A
RCA Plug Solderless



MW-007B
Right Angle RCA Plug



MW-007C
Right Angle RCA Plug



MW-008A
UHF Male Solderless



MW-008B
Right Angle UHF Male



MW-008C
Right Angle UHF Male



MW-009A
TNC Male Solderless



MW-009B
Right Angle TNC Male



MW-009C
Right Angle TNC Male



MW-010A
TNC Female Solderless



MW-010B
Right Angle TNC Female



MW-010C
Right Angle TNC Female



HOME

Page 45

Page 47

Then I'll Receive Your Mail

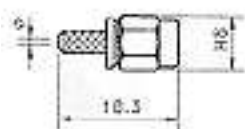




SMA CONNECTORS

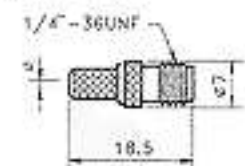
S-001

Plug Crimp



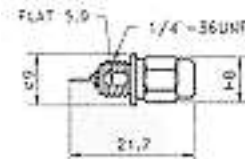
S-002

Jack Crimp



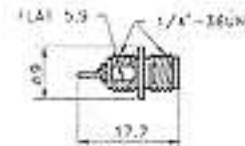
S-003

Plug Solder Bulkhead



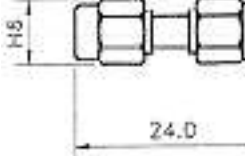
S-004

Jack Solder Bulkhead



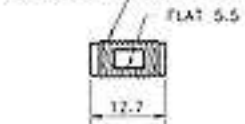
S-005

Plug-Plug



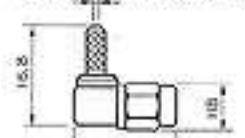
S-006

Jack-Jack



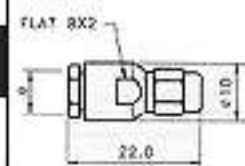
S-007

Plug Right Angle Crimp



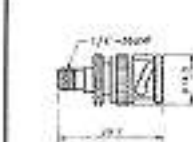
S-008

Plug Clamp



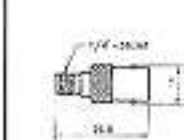
S-009

SMA Jack-BNC Plug



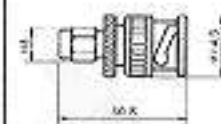
S-010

SMA Jack-BNC Jack



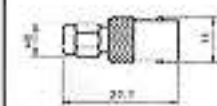
S-011

SMA Plug-BNC Plug



S-012

SMA Plug-BNC Jack



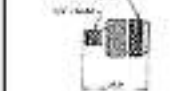
S-013

SMA Jack-TNC Plug



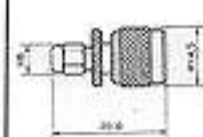
S-014

SMA Jack-TNC Jack



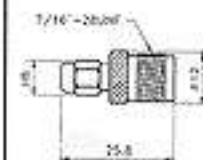
S-015

SMA Plug-TNC Plug



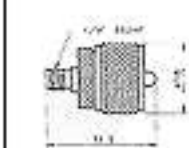
S-016

SMA Plug-TNC Jack



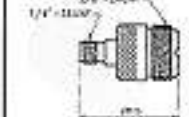
S-017

SMA Jack-UHF Plug



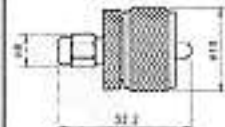
S-018

SMA Jack-UHF Jack



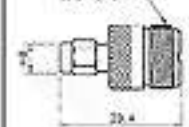
S-019

SMA Plug-UHF Plug



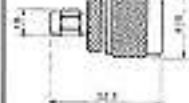
S-020

SMA Plug-UHF Jack



S-021

SMA Plug-N Plug



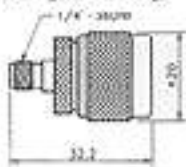
ADCON



SMA CONNECTORS

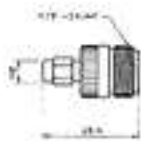
S-022

SMA Jack-N Plug



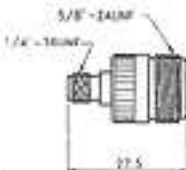
S-023

SMA Plug-N Jack



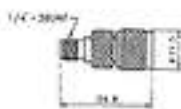
S-024

SMA Jack-N Jack



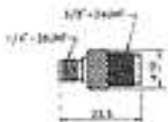
S-025

SMA Jack-Mini UHF Plug



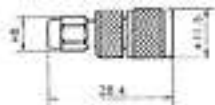
S-026

SMA Jack-Mini UHF Jack



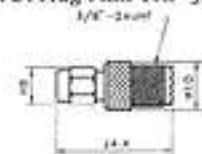
S-027

SMA Plug-Mini UHF Plug



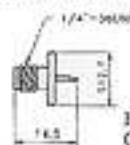
S-028

SMA Plug-Mini UHF Jack



S-029

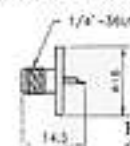
Jack Solder Panel



HOLE SIZE: 2.6mm x 4
CENTER TO CENTER: 8.6mm

S-030

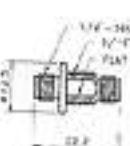
Jack Solder Panel



HOLE SIZE: 2.6mm x 2
CENTER TO CENTER: 12.2mm

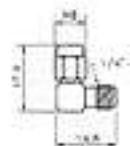
S-031

Jack-Jack Bulkhead



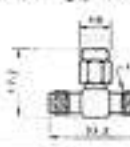
S-032

Plug-Jack Right Angle



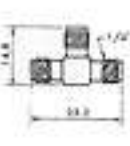
S-033

Jack-Plug-Jack \"TEE\"



S-034

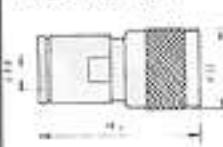
Jack-Jack-Jack \"TEE\"



TWINAX CONNECTORS

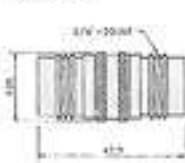
TN-001

Plug Clamp Type



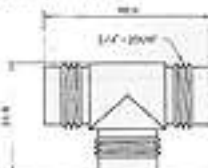
TN-002

Jack-Jack



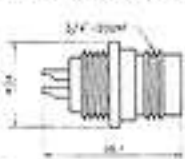
TN-003

Jack-Jack-Jack \"TEE\"



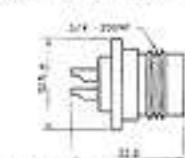
TN-004

Jack Bulkhead-Rear Mount



TN-005

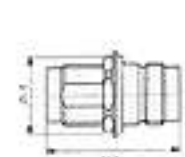
Jack Panel Mount



HOLE SIZE: 3.2mm x 4
CENTER TO CENTER: 18.2mm

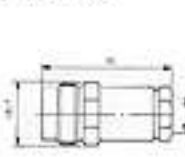
TN-006

Jack-Jack Bulkhead Receptacle



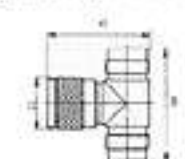
TN-007

Jack Clamp



TN-008

Jack-Plug-Jack \"TEE\"

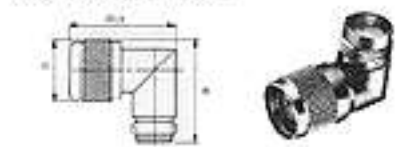




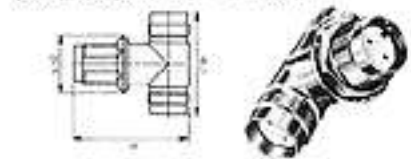
TWINAX CONNECTORS

BNC CONNECTORS

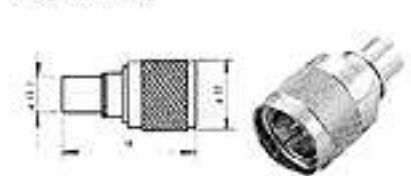
TN-009
Plug-Jack Right Angle



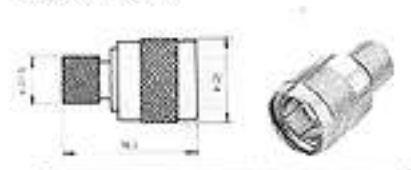
TN-010
Jack Jack Jack "TH" Bulkhead



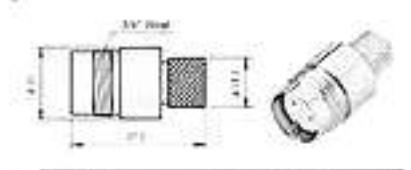
TN-011
Plug Moulding



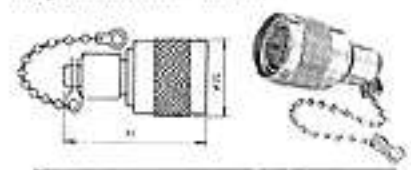
TN-012
Plug Terminator



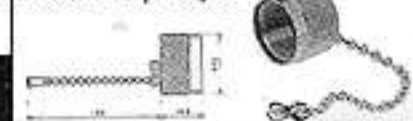
TN-013
Jack Terminator



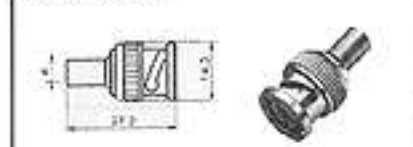
TN 014
Plug Terminator + Chain



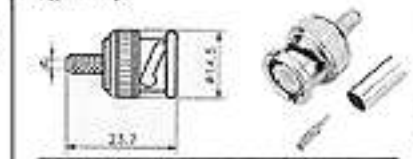
TN-015
Protective Cap For Jack



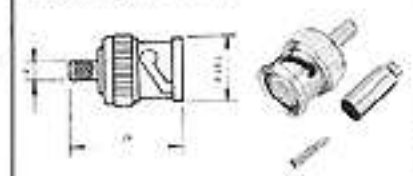
B-001
Plug Moulding



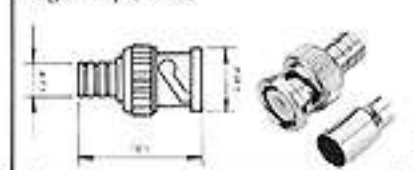
B-002
Plug Crimp



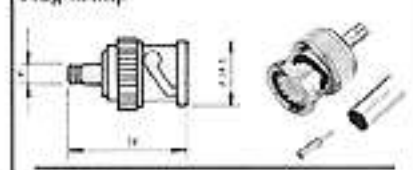
B-002-1
Plug Crimp (RG 174II)



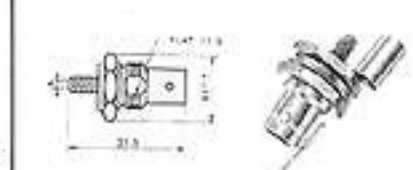
B-003
Plug Crimp (2PCS)



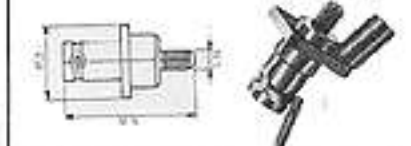
B-004
Plug Crimp



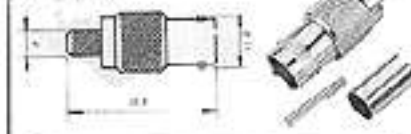
B-005
Jack Crimp Bulkhead



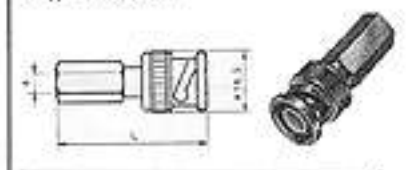
B-006
Jack Crimp Panel



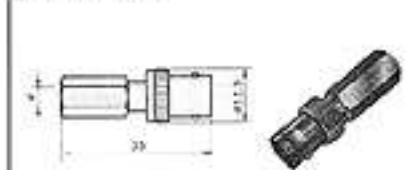
B-007
Jack Crimp



B-008
Plug Twist on



B-009
Jack Twist on



B-010
Plug Right Angle Crimp



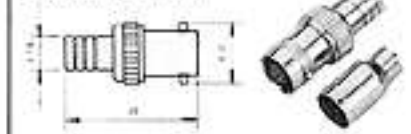
B-011
Plug Right Angle Clamp



B-012
Jack Solder Panel



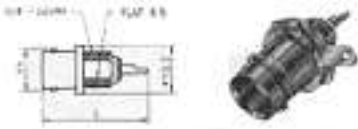
B-013
Jack Crimp (2PCS)





BNC CONNECTORS

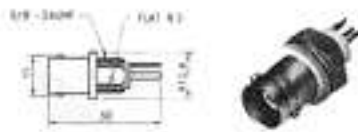
B-014
Jack Solder Bulkhead



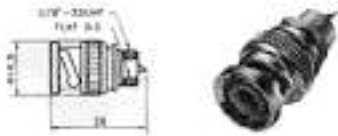
B-014-1
Jack Solder Bulkhead
(Long Thread)



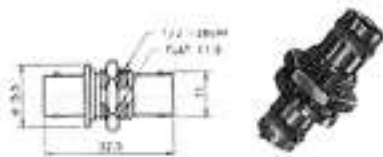
B-014 IF
Jack Isolated Bulkhead



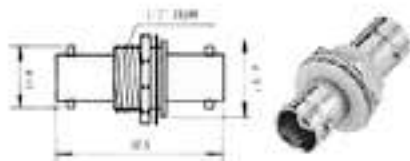
B 015
Plug Solder Bulkhead



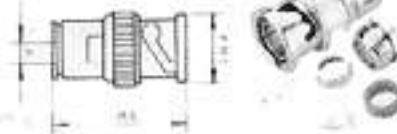
B 016
Jack Jack Bulkhead



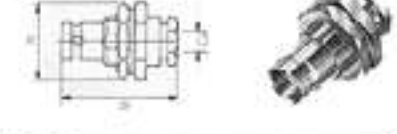
B-017
Jack-Jack Isolated Bulkhead



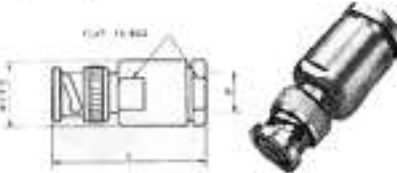
B-017
Plug Clamp



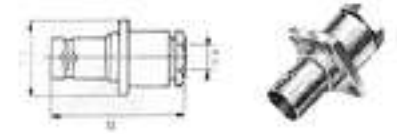
B-018
Jack Clamp Bulkhead



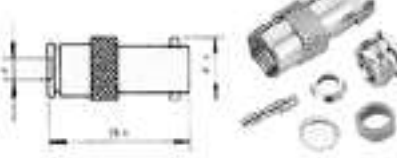
B-019
Plug Clamp (RG 213)



B-020
Jack Clamp Panel Mount



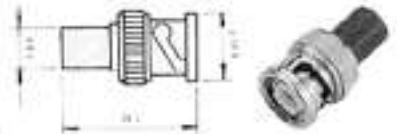
B-021
Jack Clamp



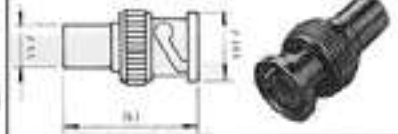
B-022
Plug Wedge Compression



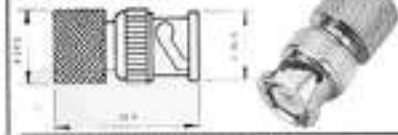
B-023
Plug Terminator With Plastic end
Cap 50Ω 75Ω 90Ω



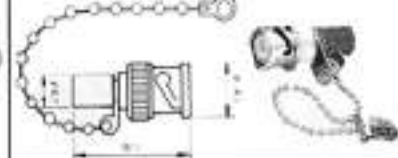
B-023-1
Plug Terminator With
Copper End Cap



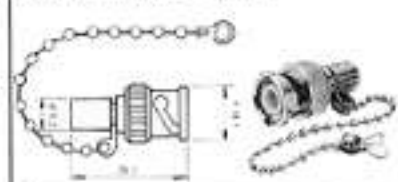
B-023-2
Plug Terminator



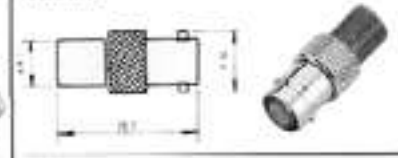
B-024 50Ω 75Ω 90Ω
Plug Terminator With Plastic End
Cap+Chain



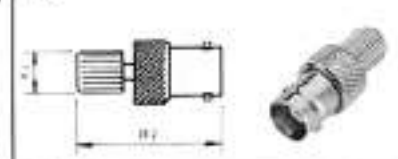
B-024-1 50Ω 75Ω 90Ω
Plug Terminator + Chain



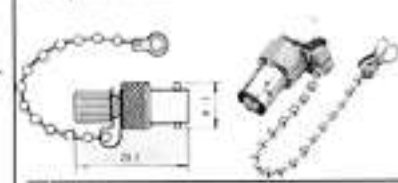
B-025 50Ω 75Ω 90Ω
Jack Terminator With Plastic
End Cap



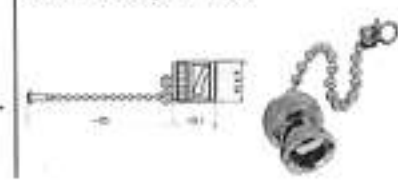
B-025-1
Jack Terminator With Copper End
Cap



B-026
BNC Jack Terminator + Chain



B-027
Protective Cap For Jack



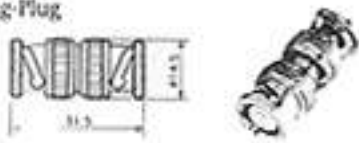


BNC CONNECTORS

B-028 Cop
Protective CAP For Plug



B-029
Plug-Plug



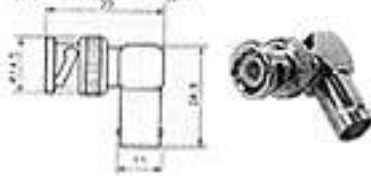
B-030
Jack-Jack



B-031
Jack-Plug-Jack "TEE"



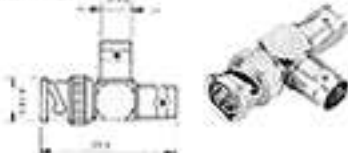
B-032
Plug-Jack Right Angle



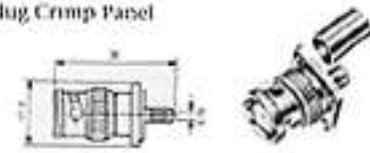
B-033
Jack-Jack-Jack "TEE"



B-034
Plug-Jack-Jack "TEE"



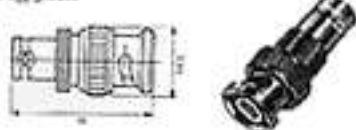
B-035
Plug Crimp Panel



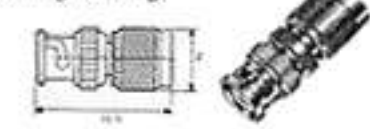
B-036
Plug Solder Panel



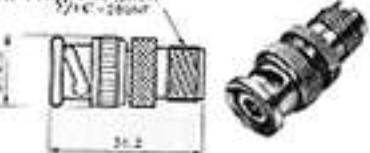
B-037
Plug-Jack



B-038
Box Plug-Tnc Plug



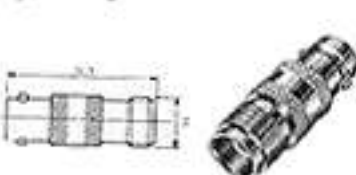
B-039
Bnc Plug-Tnc Lock
1/4" C-260007



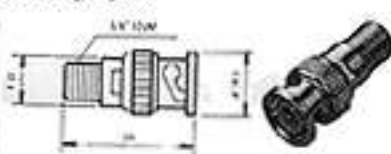
B-040
Bnc Plug-Tnc Jack Right Angle



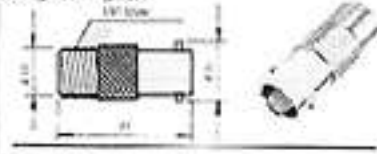
B-041
Bnc Jack-Tnc Jack



B-042
Bnc Plug-F Jack



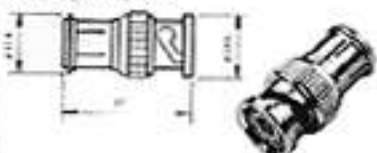
B-043
Bnc Jack-F Jack



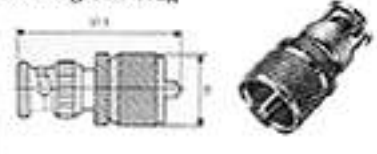
B-044
Bnc Plug-Pal Plug



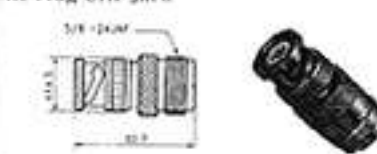
B-045
Bnc Plug-Pal Jack



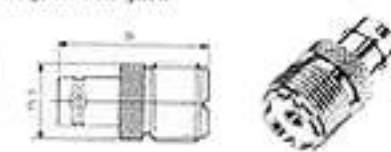
B-046
Bnc Plug-UHF Plug



B-047
Bnc Plug-UHF Jack



B-048
Bnc Jack UHF Jack

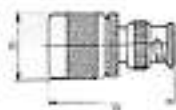




BNC CONNECTORS

B-049

Bnc-Plug-N Plug



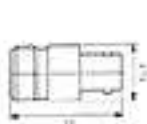
B-050

Bnc Plug-N Jack



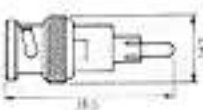
B-051

Bnc Jack-N Jack



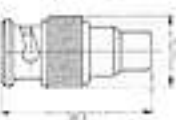
B-052

Bnc Plug-RCA Plug



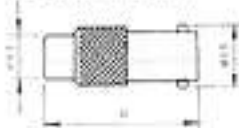
B-053

Bnc Plug-RCA Jack



B-054

Bnc Jack RCA Jack



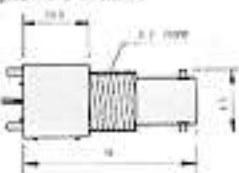
B-055

Jack-P.C. board



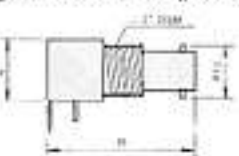
B-056

Jack PC Mount



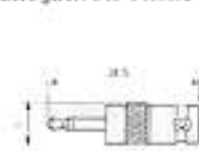
B-057

Jack PC Mount Right Angle



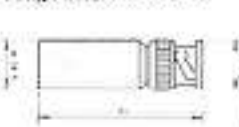
B-058

Bnc Jack 3.5 Phone



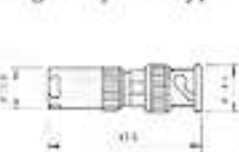
B-060

Plug Antenna Mount



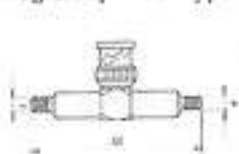
B-061

Plug Clamp Lock Type



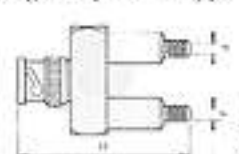
B-062

Plug Crimp "TEE" Type



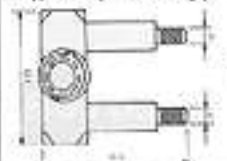
B-063

Plug Crimp 180° Y Type



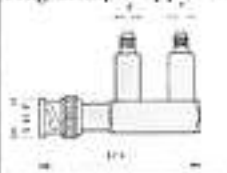
B-064

Plug Crimp 90° Y Type



B-065

Plug Crimp F Type



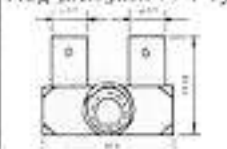
B-066

Plug-Jack-Jack 180° Y Type



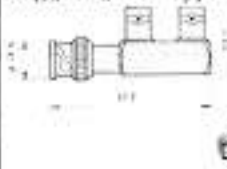
B-067

Plug-Jack-Jack 90° Y Type



B-068

Plug-Jack-Jack F Type



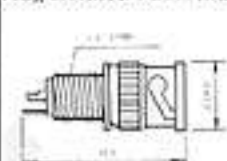
B-069

Jack-Plug-Plug 180° Y Type



B-070

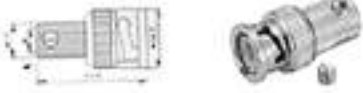
Plug Isolated Bulkhead





BNC CONNECTORS

B-071
BNC Male Rapid



B-072
BNC Female Bulkhead Twist On



B-073
BNC Male Lock Common Type



B-074
Right Angle BNC Female Pc Mount



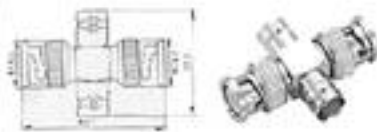
B-075
BNC Female To Double BNC Male



B-076
BNC Three Female To BNC Male



B-077
BNC Double Male To BNC Double Female



B-078
BNC Male Crimp On If Type



B-079
BNC Male Double BNC Female



B-080
BNC Male To Double BNC Female



B-081
BNC Male To Double BNC Female



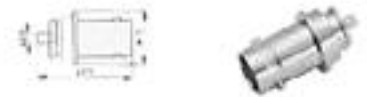
B-082
BNC Female P.C. Mount



B-083
BNC Four Female



B-084
BNC Female Molded



HOME

Page 52

Page 54

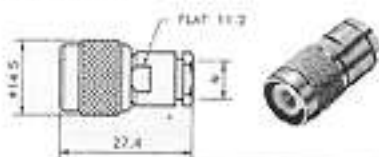
Then I'll Receive Your Mail



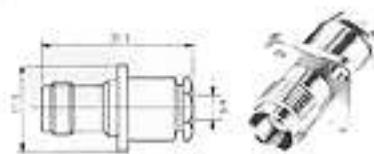


TNC CONNECTORS

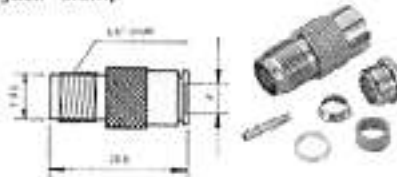
T-001
Plug Clamp



T-002
Jack Clamp Panel



T-003
Jack Clamp



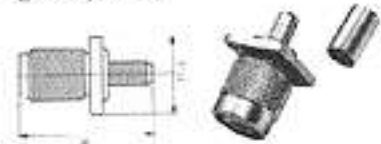
T-004
Plug Crimp



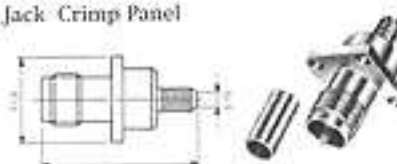
T-005
Jack Crimp Bulkhead



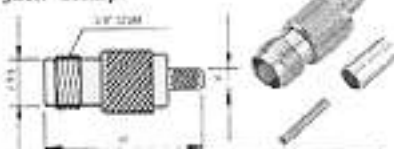
T-006
Plug Crimp Panel



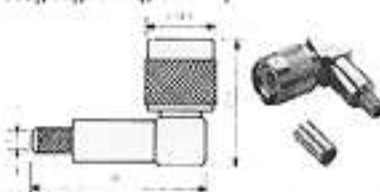
T-007
Jack Crimp Panel



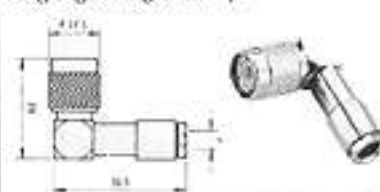
T-008
Jack Crimp



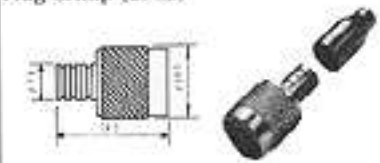
T-009
Plug Right Angle Crimp



T-010
Plug Right Angle Clamp



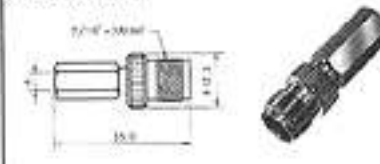
T-011
Plug Crimp (2PCS)



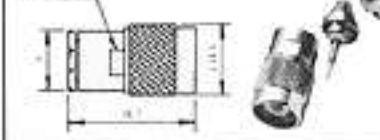
T-012
Plug Twist On



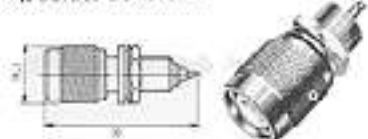
T-013
Jack Twist On



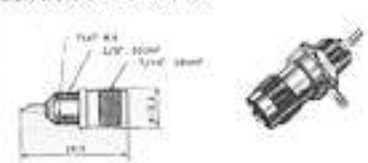
T-014
Plug Wedge Compression
FLAT 1:1.200



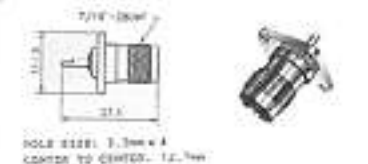
T-015
Plug Solder Bulkhead



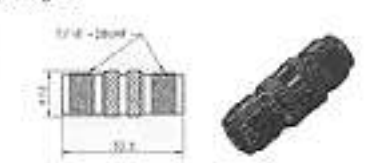
T-016
Jack Solder Bulkhead



T-017
Jack Solder Panel



T-018
Jack Jack



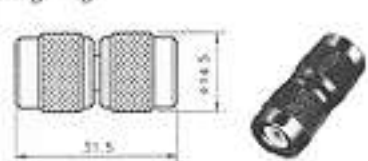
T-019
Jack-Jack Bulkhead



T-019 IF
Jack-Jack Isolated Bulkhead



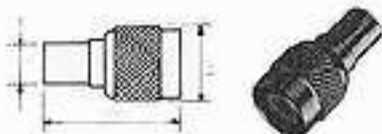
T-020
Plug Plug





TNC CONNECTORS

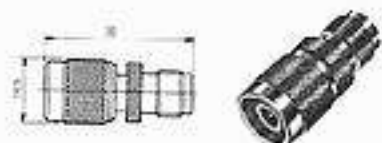
T-021
Plug Moulding



T-022
TNC Plug-UHF Jack



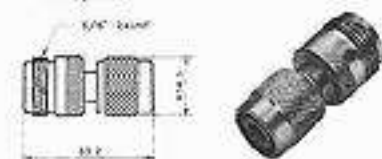
T-023
Plug-Jack



T-024
TNC Plug-BNC Jack



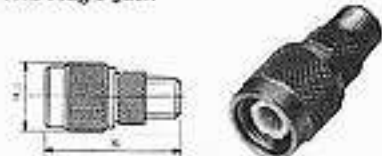
T-025
TNC Plug-N Jack



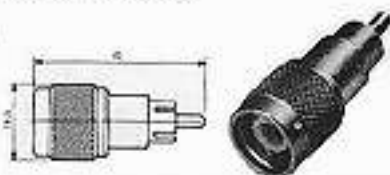
T-026
Jack-Plug Push On



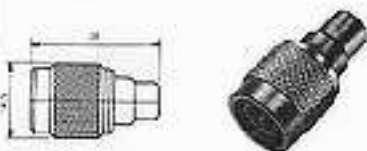
T-027
TNC Plug-F Jack



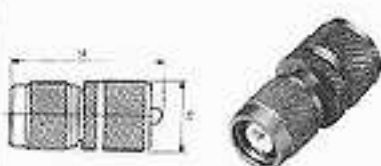
T-028
TNC Plug-RCA Plug



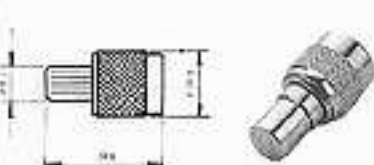
T-029
TNC Plug-RCA Jack



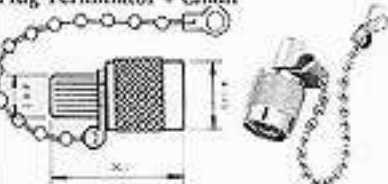
T-030
TNC Plug-UHF Plug



T-031
Plug Terminator



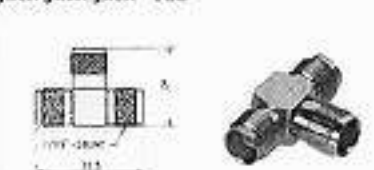
T-032
Plug Terminator + Chain



T-033
Jack-Plug Jack "TEE"



T-034
Jack-Jack-Jack "TEE"



T-035
Plug Jack Right Angle



T-036
Protective Cap For Plug



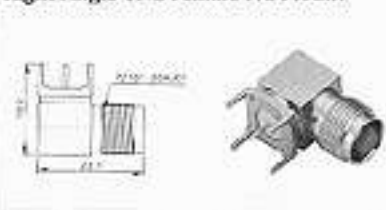
T-037
Protective Cap For Jack



T-038
TNC Jack PC Mount



T-039
Right Angle TNC Female P.C Mount



T-040
TNC Female Connectors



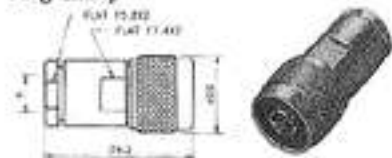
T-041
Right Angle TNC Female Bulkhead



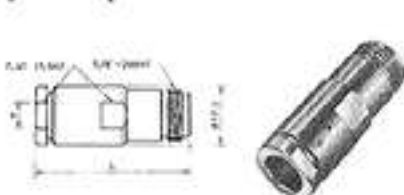


N CONNECTORS

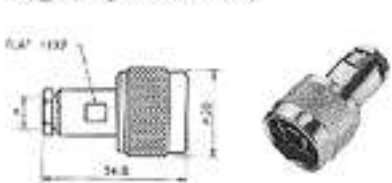
N-001 (RG58, 59, 213U)
Plug Clamp



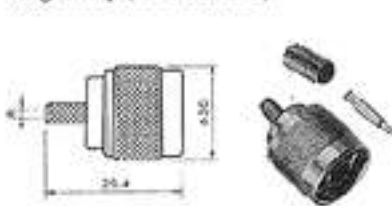
N-002
Jack Clamp



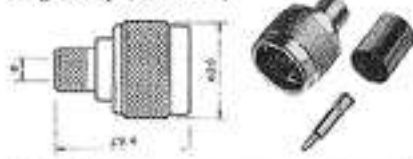
N-003
Plug Clamp (for RG58/U)



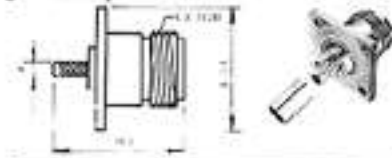
N-004
Plug Crimp (for 58U/59U)



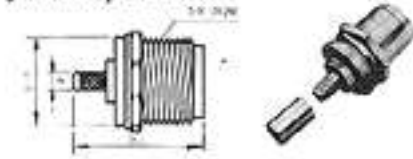
N-005
Plug Crimp (for 213U)



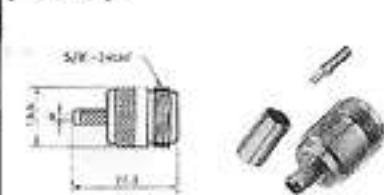
N-006
Jack Crimp Panel Mount



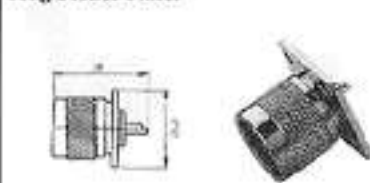
N-007
Jack Crimp Bulkhead



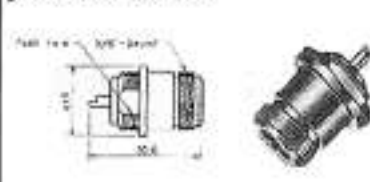
N-008
Jack Crimp



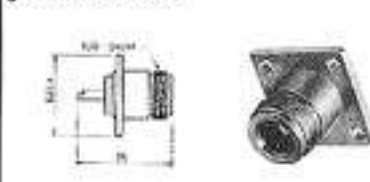
N-009
Plug Solder Panel



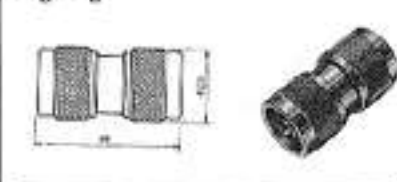
N-010
Jack Solder Bulkhead



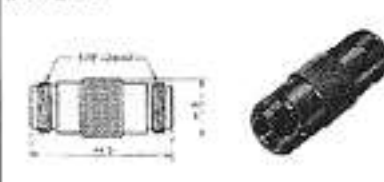
N-011
Jack Solder Panel



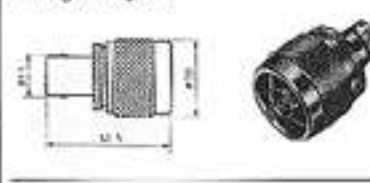
N-012
Plug-Plug



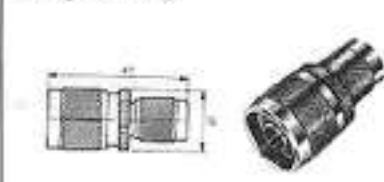
N-013
Jack-Jack



N-014
N Plug-BNC Jack



N-015
N Plug-TNC Plug



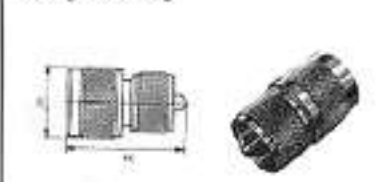
N-016
N Plug-TNC Jack



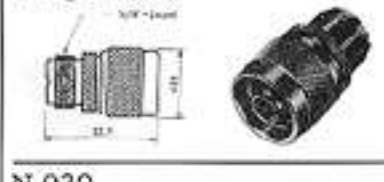
N-017
N Jack-TNC Jack



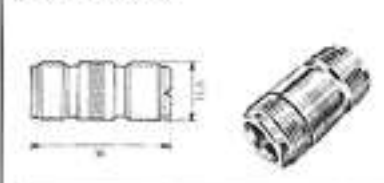
N-018
N Plug-UHF Plug



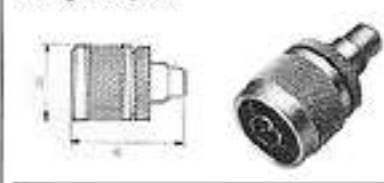
N-019
N Plug UHF Jack



N-020
N Jack-UHF Jack



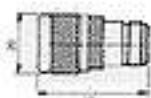
N-021
N Plug-RCA Jack



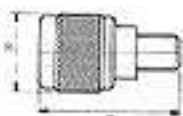


N CONNECTORS

N-022
Plug-Jack



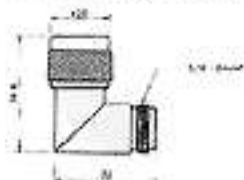
N-023
N Plug-F Jack



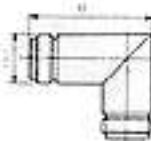
N-024
Plug-Plug Right Angle



N-025
Plug-Jack Right Angle



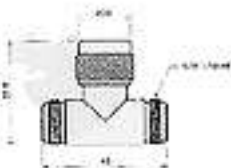
N-026
Jack-Jack Right Angle



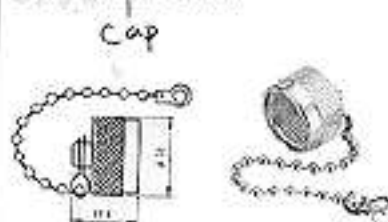
N-027
Plug-Jack-Jack "11E"



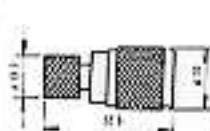
N-028
Jack-Jack-Jack "11E"



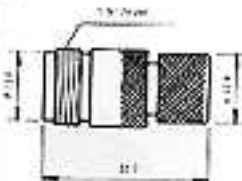
N-029
Protective CAP For Jack



N-030
Plug Terminator

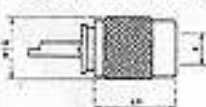


N-031
Jack Terminator

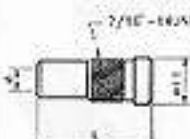


UHF CONNECTORS

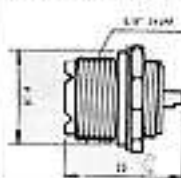
U-001
Plug Twist On (PL 259)



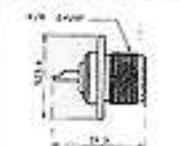
U-002
Reducer (For PL-259 213U)



U-003
Jack Solder Bulkhead

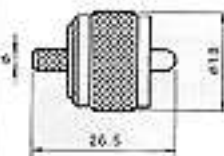


U-004
Jack Solder Panel (SO 239)

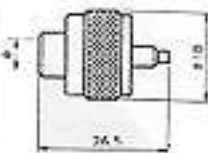


SOLE SIZE: 5.2mm x 4
CENTER TO CENTER: 18.2mm

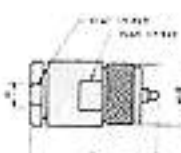
U-005
Plug Crimp



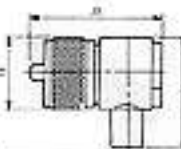
U-006
Plug Twist On (PL-759 Short)



U-007
Plug Clamp



U-008
Plug Right Angle Twist On



U-009
Jack Right Angle Twist On



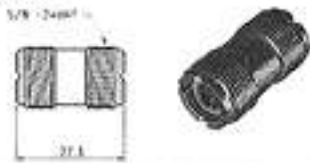


UHF CONNECTORS

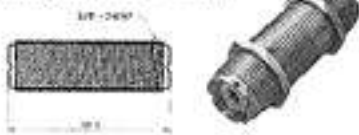
U-010
Plug-Plug



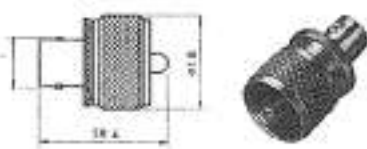
U-011
Jack-Jack



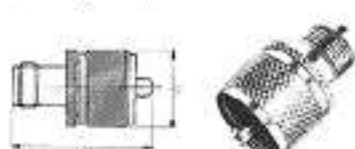
U-012
Jack-Jack (Long Thread)



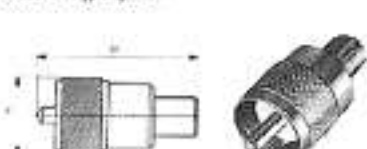
U-013
UHF Plug-Rnc Jack



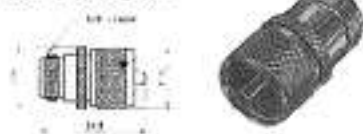
U-014
UHF Plug-Tnc Jack



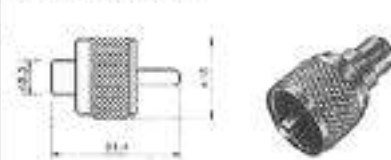
U-015
UHF Plug-F Jack



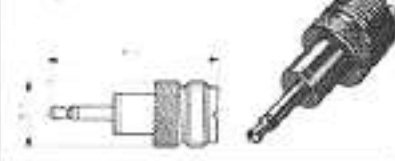
U-016
UHF Plug-N Jack



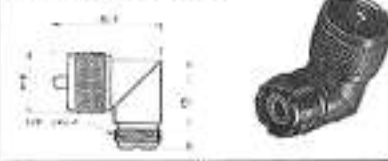
U-017
UHF Plug-RCA Jack



U-018
UHF Jack-3.5 Phone



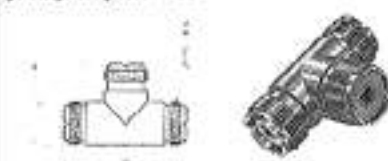
U-019
Plug Jack Right Angle



U-020
Jack-Plug-Jack "TEE"



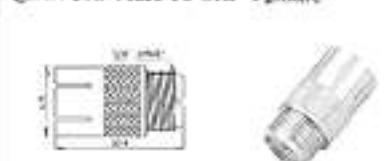
U-021
Jack-Jack-Jack "TEE"



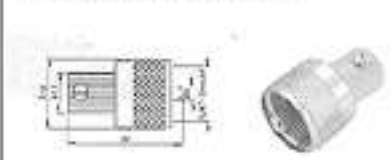
U-022
UHF Double Female



U-023
Quick UHF Male To UHF Female

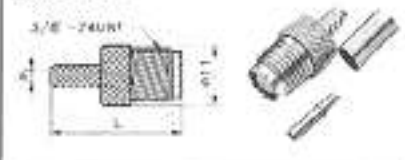


U-024
UHF Male Rapid Connector

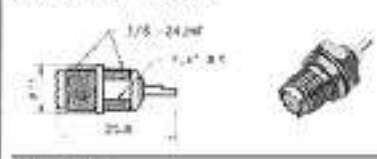


MINI-UHF CONNECTORS

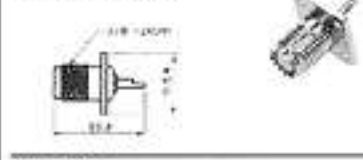
MU-001
Jack Crimp



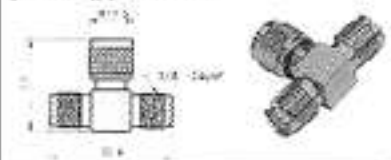
MU-002
Jack Solder Bulkhead



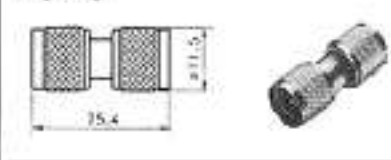
MU-003
Jack-Solder Panel



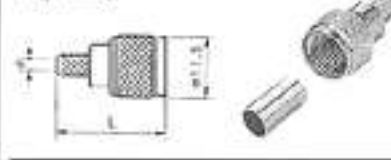
MU-004
Jack-Plug-Jack "TEE"



MU-005
Plug-Plug



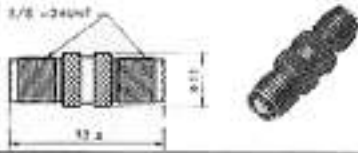
MU-006
Plug Crimp



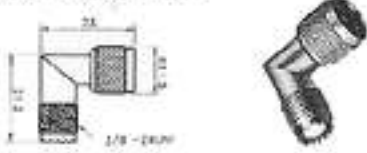


MINI-UHF CONNECTORS

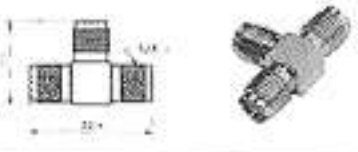
MU-007
Jack-Jack



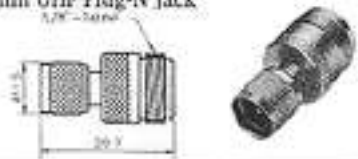
MU-008
Plug-Jack Right Angle



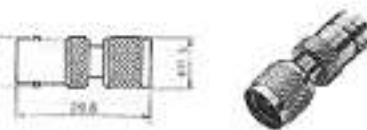
MU-009
Jack-Jack-Jack "Tee"



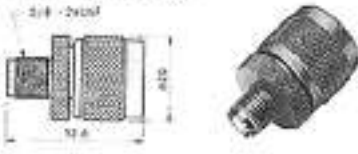
MU-010
Mini UHF Plug-N Jack



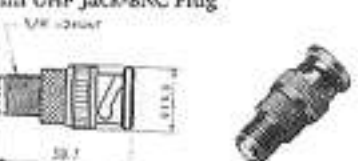
MU-011
Mini UHF Plug-BNC Jack



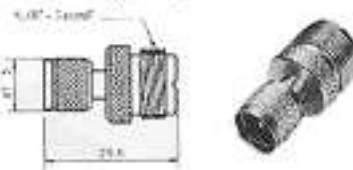
MU-012
Mini UHF Jack-N Plug



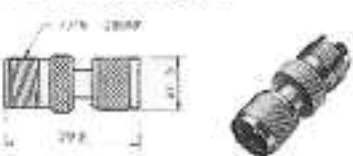
MU-013
Mini UHF Jack-BNC Plug



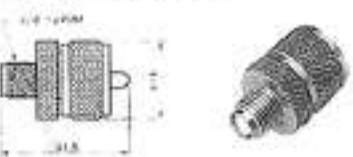
MU-014
Mini UHF Plug-UHF Jack



MU-015
Mini UHF Plug TNC Jack



MU-016
Mini UHF Jack-UHF Plug



MU-017
Mini UHF Jack-TNC Plug



CONNECTORS FOR ANTENNA

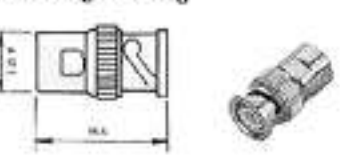
NP-001
NIPPLE Jack Crimp



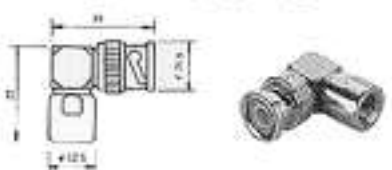
NP-002
Plug-Plug



NP-003
NIPPLE Plug-BNC Plug



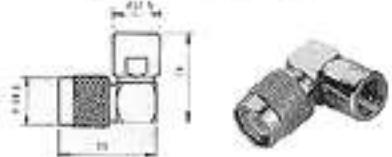
NP-004
NIPPLE Plug-BNC Plug Right Angle



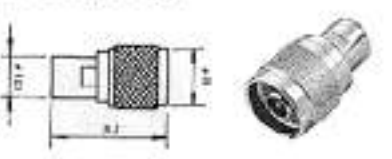
NP-005
NIPPLE Plug-TNC Plug



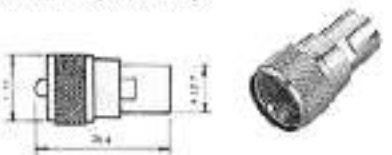
NP-006
NIPPLE Plug-TNC Plug Right Angle



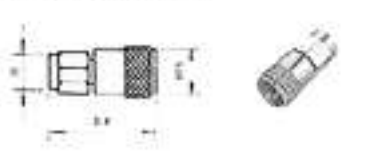
NP-007
NIPPLE Plug-N Plug



NP-008
NIPPLE Plug UHF Plug



NP-009
NIPPLE Plug-SMA Plug



NP-010
NIPPLE Plug-Mini UHF Plug





F CONNECTORS

F-015
Jack Bulkhead Receptacle (F-61)

F-016
Jack-Jack Bulkhead (F-81)

F-017
Plug Terminator (75 Ohm)

F-018
Jack-Plug Push On

F-019
Plug-Plug

F-020
Jack Pc Mount

F-021
Jack Pc Mount

F-022
F Connector

F-023
F Female To RCA Female

F-024
F Connector

F-025
F Male Right Angle Twist On

F-026
F Female To N Female

F-027
F Quick Male Double F Female

F-028-R(Tin Nickel Plated)
-G(Gold Plated)
F Connector

F-029-G(Gold Plated)
F Connector

F-030
F Plug P.C Mount

RCA CONNECTORS

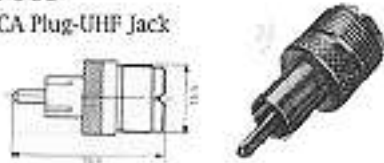
R-001
RCA Plug-8NC Jack

R-002
RCA Plug-TNC Jack

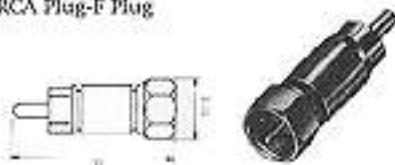


RCA CONNECTORS

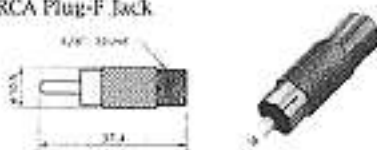
R-003
RCA Plug-UHF Jack



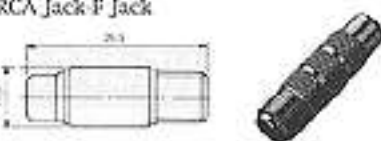
R-004
RCA Plug-F Plug



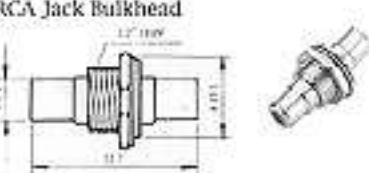
R-005
RCA Plug-F Jack



R-006
RCA Jack F Jack



R-007
RCA Jack Bulkhead



R-008
RCA Plug-PAL Jack

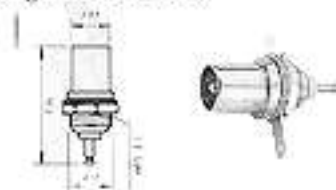


R-009
RCA Male Crimp

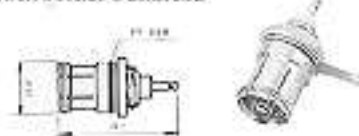


EUROPEAN CONNECTORS

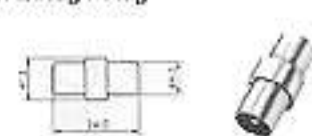
E-001
Plug Solder Bulkhead



E-002
Jack Solder Bulkhead



E-003
PAL Plug F Plug



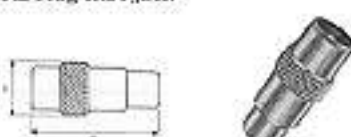
E-004
PAL Plug-F Jack



E-005
PAL Jack Quick-F Jack



E-006
PAL Plug-RCA Jack



E-006MH
Mini RCA Plug To F Jack



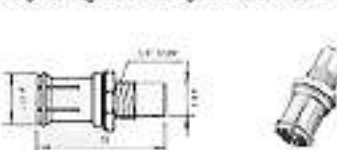
E-007
PAL Jack Quick-RCA Jack



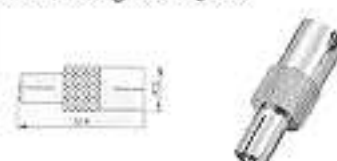
E-008
PAL Jack-F Plug



E-009
PAL Jack Quick-RCA Jack Bulkhead



E-009MH
Mini RCA Plug To Pal Jack



E-110
RCA Plug To Jack





TERMINAL BLOCKS

TB-04-A,B,C

Series Pitch 11mm

Specifications:

Wire Range Awg:14-22 STR.

Rating:20 Amperes,300 VAC

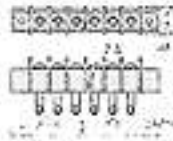
Insulation Withstands Voltage AC

2000 Insulation Resistance 500MΩ

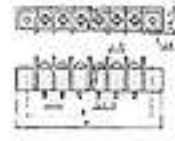
More At DC 500V



TB-04-A



TB-04-B



TB-04-C

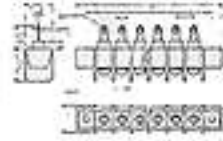


Table 10-10

AWG	14	16	18	20	22	24	26	28	30	32	34	36	38	40
mm	1.6	2.0	2.5	3.2	4.0	5.0	6.3	8.0	10.0	12.5	16.0	20.0	25.0	31.5
mm	1.6	2.0	2.5	3.2	4.0	5.0	6.3	8.0	10.0	12.5	16.0	20.0	25.0	31.5

TB-05-A,B,C,D

Series Pitch 8.25mm

Specifications:

Wire Range Awg:16-22 STR.

Rating:15 Amperes,300 VAC

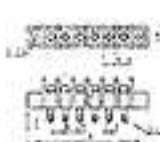
Insulation Withstands Voltage AC

2000 Insulation Resistance 500MΩ

More At DC 500V



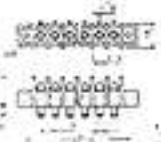
TB-05-A



TB-05-B



TB-05 C



TB-05-D

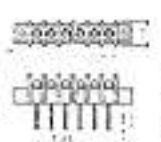


Table 10-11

AWG	16	18	20	22	24	26	28	30	32	34	36	38	40
mm	1.6	2.0	2.5	3.2	4.0	5.0	6.3	8.0	10.0	12.5	16.0	20.0	25.0
mm	1.6	2.0	2.5	3.2	4.0	5.0	6.3	8.0	10.0	12.5	16.0	20.0	25.0

TB-06-A,B,C,D

Series Pitch 7.62mm

Specifications:

Wire Range Awg:16-22 STR.

Rating:10 Amperes,300 VAC

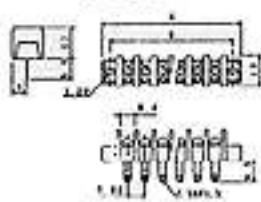
Insulation Withstands Voltage AC

2000 Insulation Resistance 500MΩ

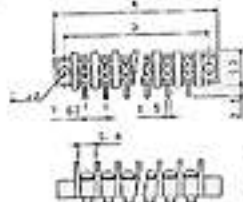
More At DC 500V



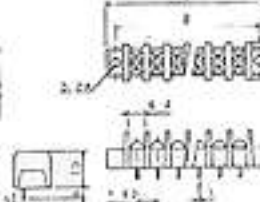
TB-06-A



TB-06-B



TB-06-C



TB-06-D

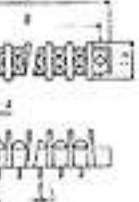


Table 10-12

AWG	16	18	20	22	24	26	28	30	32	34	36	38	40
mm	1.6	2.0	2.5	3.2	4.0	5.0	6.3	8.0	10.0	12.5	16.0	20.0	25.0
mm	1.6	2.0	2.5	3.2	4.0	5.0	6.3	8.0	10.0	12.5	16.0	20.0	25.0

TB-07-A,B,C,D

Series Pitch 9.5mm

Specifications:

Wire Range Awg:14-22 STR.

Rating:15 Amperes,300 VAC

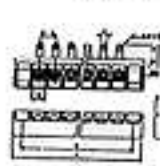
Insulation Withstands Voltage AC

2000 Insulation Resistance 500MΩ

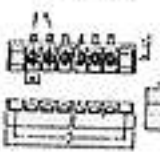
More At DC 500V



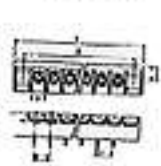
TB-07-A



TB-07-B



TB-07-C



TB-07 D

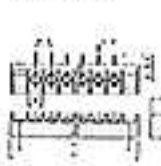


Table 10-13

AWG	14	16	18	20	22	24	26	28	30	32	34	36	38	40
mm	1.6	2.0	2.5	3.2	4.0	5.0	6.3	8.0	10.0	12.5	16.0	20.0	25.0	31.5
mm	1.6	2.0	2.5	3.2	4.0	5.0	6.3	8.0	10.0	12.5	16.0	20.0	25.0	31.5

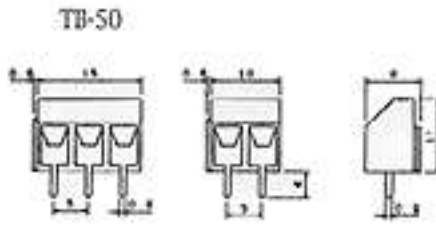




TERMINAL BLOCKS

TB-50

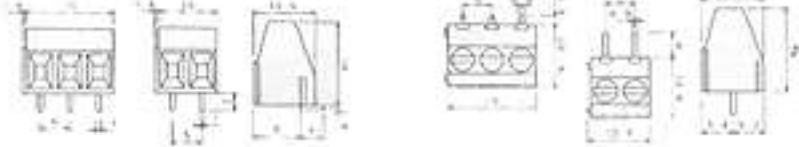
Series Pitch 5mm
 Specifications:
 Wire Range Awg:16-22 STR.
 Rating:10 Amperes,300 VAC
 Insulation Withstands Voltage AC
 2000 Insulation Resistance 500M
 Or More At DC 500V



TB-51

TB-51-A

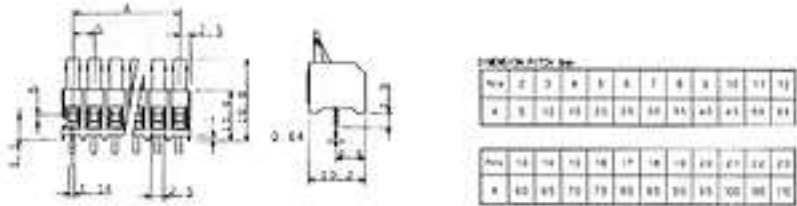
TB-51-B



TB-52

Series Pitch 5mm
 Specifications:
 Wire Range Awg:16-22 STR.
 Rating:10 Amperes,300 VAC
 Insulation Withstands Voltage AC
 2000 Insulation Resistance 500M
 Or More At DC 500V

TB-52



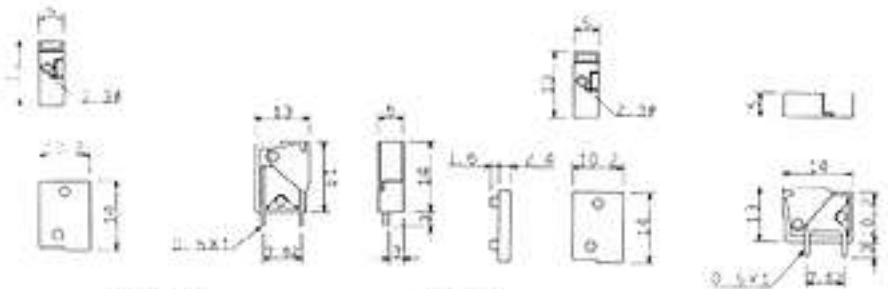
DIMENSIONS IN MM											
1	2	3	4	5	6	7	8	9	10	11	12
1	2	3	4	5	6	7	8	9	10	11	12

TB-53-A,B

Series Pitch 7.62mm
 Specifications:
 Wire Range Awg:14-18 STR.
 Rating:10 Amperes,300 VAC
 Insulation Withstands Voltage AC
 2000 Insulation Resistance 500M
 Or More At DC 500V

TB-53-A

TB-53-B

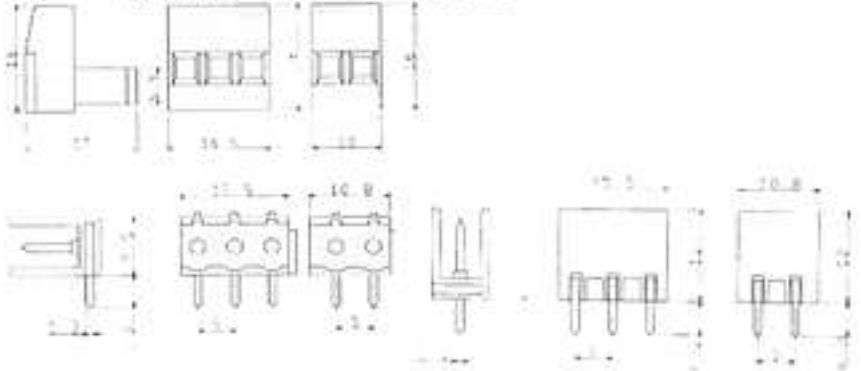


TB-54-A,B

Series Pitch 5mm
 Screws:Zinc Plate Steel
 Available In Multi Poles From
 2 Thru 24
 Rating:10 Amperes,400 Vac
 Insulation Withstands Voltage
 AC2000
 Insulation Resistance 500MΩ
 Or More At DC 500V

TB-54-A

TB-54-B



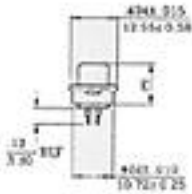
ADCON



COMPUTER ACCESSORIES

EW-DS

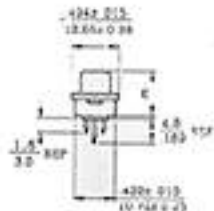
D-Sub Solder Type
 Contents:9,15,19,23,25,37,50
 Pitch(m/m):2.77 X 2.84



Contacts	9P	15P	19P	23P	25P	37P	50P
Male	DS-9M	DS-15M	DS-19M	DS-23M	DS-25M	DS-37M	DS-50M
Female	DS-9F	DS-15F	DS-19F	DS-23F	DS-25F	DS-37F	DS-50F

EW-DHD

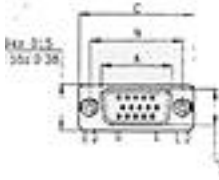
D-Sub High Density Solder Type
 Contents:15,26,44
 Pitch(m/m):2.29 X 1.98



Contacts	15P	26P	44P	62P
Male	DHD-S-15M	DHD-S-26M	DHD-S-44M	DHD-S-62M
Female	DHD-S-15F	DHD-S-26F	DHD-S-44F	DHD-S-62F

EW-DSP

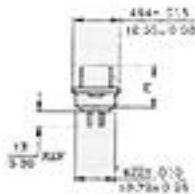
D-Sub P.C.B Straight Type
 Contents:9,15,19,23,25,37,50
 Pitch(m/m):2.77 X 2.84



Contacts	9P	15P	19P	23P	25P	37P	50P
Male	DSP-9M	DSP-15M	DSP-19M	DSP-23M	DSP-25M	DSP-37M	DSP-50M
Female	DSP-9F	DSP-15F	DSP-19F	DSP-23F	DSP-25F	DSP-37F	DSP-50F

EW-DPR

D-Sub P.C.B Right Angle Type
 Contents:9,15,25,37
 Pitch(m/m):2.77 X 2.84



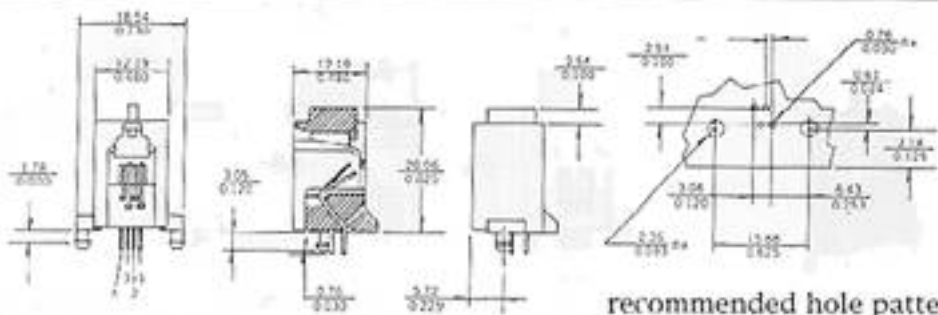
Contacts	9P	15P	25P	37P
Male	DPR-9M	DPR-15M	DPR-25MM	DPR-37M
Female	DPR-9F	DPR-15F	DPR-25F	DPR-37F





MODULAR JACK

616

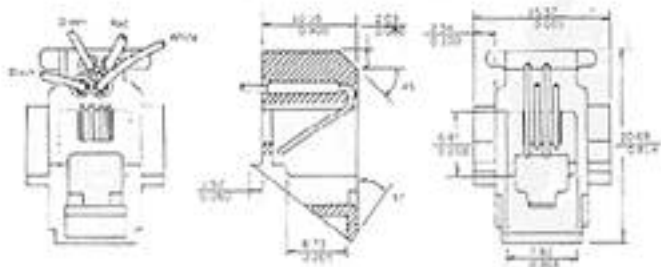


recommended hole pattern

Hand Set Cord Connectors

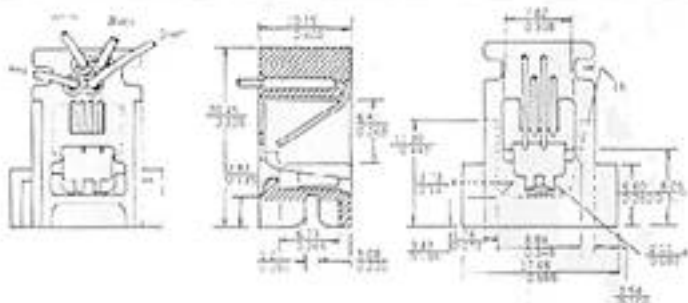
616W

Part No:616W-***



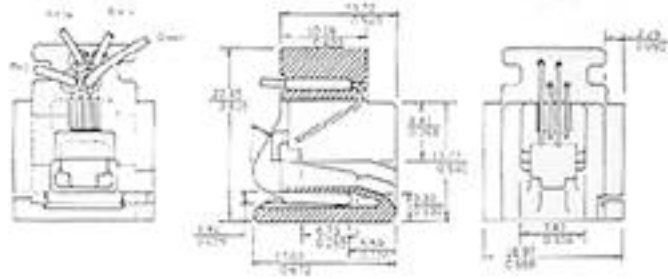
616B

Part No:616B-***



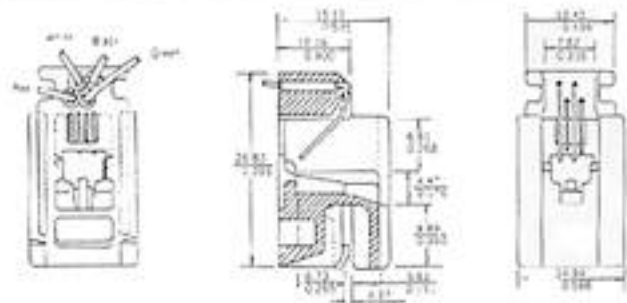
616C

Part No:616C-***



616D

Part No:616D-***





TYPE		842	812H	833H	801A
PHOTO					
	DESCRIPTION				
Size (LxWxI)mm No including terminals		10.9x15.7x12.0	21x16x16.3	19x15.5x15	22.5x16.5x20.2
Contact Configuration		1 FORM C	1 FORM A	1 FORM C,B	1 FORM A TO 1 FORM C
Max. Allowable Contact current(A)	40				
	35				
	30				
	25				
	20				
	15				
	12				8A
	3				
Cuntar Ratings		3A/120VAC	12A/125VAC 7A/250VAC	10A/125VAC 7A/250VAC	8A/125VAC
Resistive load		3A/28VDC	7A/30VDC TV-5	7A/250VAC 7A/30VDC	5A/250VAC 8A/30VDC
Coil Voltage	DC	3~24VDC	3~48VDC	3~48VDC	3~60VDC
	AC				
Coil Operating Power at nominal voltage	DC	0.2W	0.36W	0.36W	0.36W
	AC				
Expected mechanical life(Min.)		1x10 ⁷	1x10 ⁷	1x10 ⁷	1x10 ⁷
Expected electrical life(Min.)		5x10 ⁶	1x10 ⁶	1x10 ⁶	1x10 ⁶
Dielectric Strength AC Voltage -1 minute					
between open contact		500V	500V	500V	750V
between contact and coil		500V	1500V	1500V	1500V
between live parts and ground					
Terminal Layout (mm) Bottom view (PCB Layout)					
Terminal Type					
Safety Approval		UL CUR	UL CSA UL	UL	UL
File NO.		E74321 E74321	E88991 LR90143 R9452021	E74321	E74321



801H			771-S			845,845H 1P			845,845H 2P			793		
22.5x16.5x20.2			29x13x29			29x12.7x18.5			29x12.7x18.5			29x13x25.5		
1 FORM A	1 FORM C,B		1 FORM A	1 FORM C,B		1 FORM A TO 1 FORM C		2 FORM A TO 2 FORM C		1 FORM A	1 FORM C,B			
						8451P	845A1P	8452P	845H2P					
15A/125VAC 10A/250VAC 10A/30VDC 1/2 HP 125VAC 1/2 HP 250VAC TV-8	15A/125VAC 10A/250VAC 10A/30VDC 1/4 HP 125VAC 1/4 HP 250VAC TV-3		12A/125VAC 10A/250VAC 10A/30VDC TV-8	10A/125VAC 10A/250VAC 10A/30VDC		10A/227VAC 10A/30VDC 1/3 HP 227VAC 1/3 HP 125VAC TV-4(SPNO)	12A/227VAC 12A/30VDC 1/2 HP 227VAC 1/2 HP 125VAC TV-6(SPNO)	5A/227VAC 5A/30VDC 1/8 HP 227VAC 1/8 HP 125VAC TV-3(DPNO)	8A/227VAC 8A/30VDC 1/4 HP 227VAC 1/4 HP 125VAC TV-5(DPNO)	8A	20A/125VAC 20A/30VDC 16A/250VAC 1/2 HP 125VAC 1/2 HP 250VAC TV-10 COS φ 0.4 8A250VAC	16A 20A/125VAC 16A/30VDC 16A/250VAC 1/2 HP 125VAC 1/2 HP 250VAC COS φ 0.4 8A250VAC		
3~60VDC			3~120VDC			3~110VDC			3~110VDC			3~100VDC		
0.36W						0.53W	0.7W	0.53W	0.7W	0.53W			0.7W	
1x10 ⁷			1x10 ⁷			1x10 ⁷			1x10 ⁷			1x10 ⁷		
1x10 ⁹			1x10 ⁹			1x10 ⁹			1x10 ⁹			1x10 ⁹		
750V 1500V			1000V 5000V			1000V 5000V			1000V 5000V 3000V			1000V 4000V		
UL	CSA	UL	UL	CSA	TUV	UL	CSA	TUV	UL	CSA	TUV	UL	CSA	TUV
F88991	R90143	R3052399	F88991	LR90143	R9452020	Pending	Pending	Pending	Pending	Pending	Pending	E88991	LR90143	R9452015



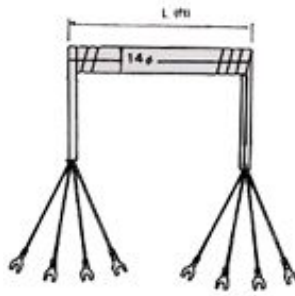
HANDSET CORDS AND LINE CORD



HANDSET CORDS AND LINE CORDS

Y TERMINALS ON BOTH ENDS

- PART NO. EXH --- 2xxxRY (2C)
 EXH --- 4xxxRY (4C)
 EXH --- 6xxxRY (6C)
 EXH --- 8xxxRY (8C)

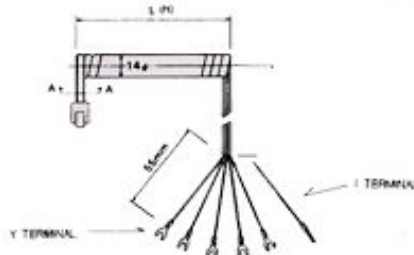


I TERMINAL ON BOTH ENDS

- PART NO. EXH --- 2xxxRI (2C)
 EXH --- 4xxxRI (4C)
 EXH --- 6xxxRI (6C)
 EXH --- 8xxxRI (8C)

PLUG AND Y TERMINALS ON END

- PART NO. EXH --- 2xxxPY (2C)
 EXH --- 4xxxPY (4C)
 EXH --- 6xxxPY (6C)
 EXH --- 8xxxPY (8C)

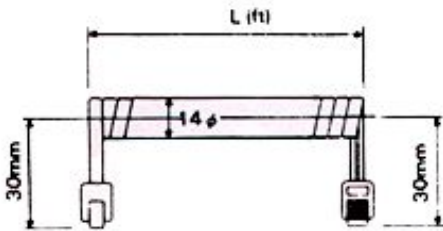


PLUG AND I TERMINAL ON EACH END

- PART NO. EXH --- 2xxxPI (2C)
 EXH --- 4xxxPI (4C)
 EXH --- 6xxxPI (6C)
 EXH --- 8xxxPI (8C)

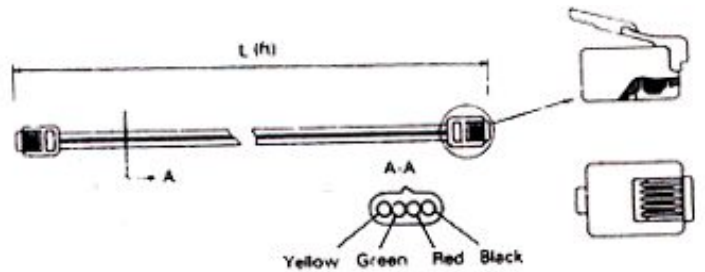
BOTH ENDS WITH PLUGS

- PART NO. EXH --- 2xxx... (2 CONDUCTORS)
 (xxx...LENGTH PER FT)
 EXH --- 4xxx... (4 CONDUCTORS)
 EXH --- 6xxx... (6 CONDUCTORS)
 EXH --- 8xxx... (8 CONDUCTORS)



ENDS WITH PLUGS

- PART NO. EXL --- 2xxx... (2 CONDUCTORS)
 (xxx...LENGTH PER FT)
 EXL --- 4xxx... (4 CONDUCTORS)
 EXL --- 6xxx... (6 CONDUCTORS)
 EXL --- 8xxx... (8 CONDUCTORS)

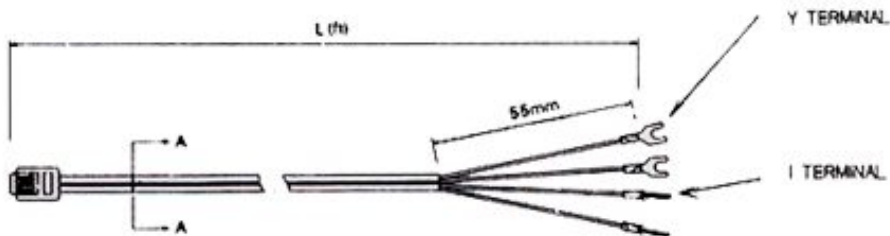


BOTH ENDS WITH Y TERMINALS

- PART NO. EXL --- 2xxxPY (2C)
 EXL --- 4xxxPY (4C)
 EXL --- 6xxxPY (6C)
 EXL --- 8xxxPY (8C)

BOTH ENDS WITH I TERMINALS

- PART NO. EXL --- 2xxxPI (2C)
 EXL --- 4xxxPI (4C)
 EXL --- 6xxxPI (6C)
 EXL --- 8xxxPI (8C)



PLUG AND I TERMINALS

- PART NO. EXL --- 2xxxRY (2C)
 EXL --- 4xxxRY (4C)
 EXL --- 6xxxRY (6C)
 EXL --- 8xxxRY (8C)

PLUG AND Y TERMINALS

- PART NO. EXL --- 2xxxRI (2C)
 EXL --- 4xxxRI (4C)
 EXL --- 6xxxRI (6C)
 EXL --- 8xxxRI (8C)



Modular Duplex Jack Extension Cord

- EXT---4xxx
- EXT---6xxx
- EXT---8xxx

Modular Single Extension Cord

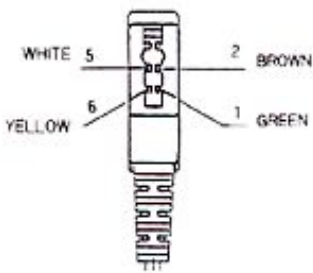
- EXS---4xxx
- EXS---6xxx
- EXS---8xxx



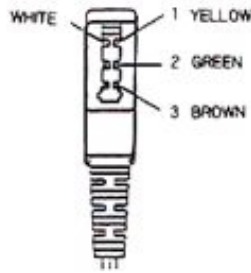
(xxx LENGTH PER FT)

HANDSET CORDS AND LINE CORDS

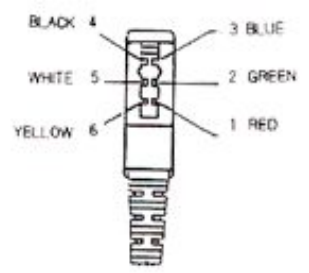
GERMANY CABLE SETS



GN-401-XXX(4 CONDUCTORS)



GN-401-XXX(4 CONDUCTORS)

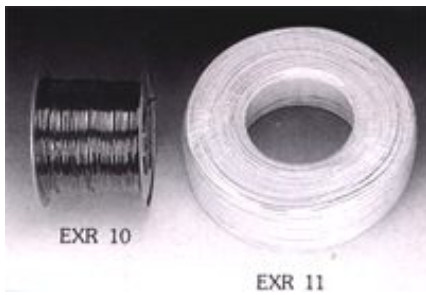


GN-601-XXX(6 CONDUCTORS)

LINE CORD REELS

SR

TERMINALS



電話線用塑膠固定扣



電話線用端子及固定扣

FACEPLATE AND MODULAR HARDWARE



EX-101 CORD COUPLER
-4C
-6C
-8C



EX-102 DUPLEX JACK
-4C x2
-6Cx2
-8Cx2



EX-103 TRIPLEX JACK
-4C
-6C



EX-104 SURFACE WITH CONNECT BLOCK ASSEMBLY
-4C
-6C



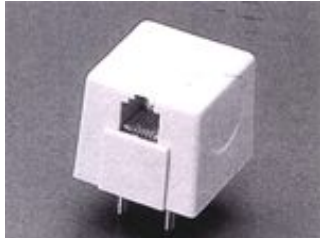
EX-105 SURFACE JACK COVER ASSEMBLY
-4C
-6C



EX-106 WALL MOUNT PHONE JACK



EX-107 5 OUTLET MODULAR JACK
-4C x5
-1FT,7FT



EX-108 FOUR PRONG PLUG TO MODULAR JACK
-4C



EX-109 3 WAYS MODULAR WALL MOUNT PHONE JACK



EX-111 MODULAR WALL JACK FLUSH MOUNTED



EX-112 TRIPLEX 2-LINE MODULAR JACK



EX-113 MODULAR DUAL JACK WALL PLATE



EX-115 MODULAR JACK



EX-119 SURFACE WITH CONNECT BLOCK ASSEMBLY WITH KEY
-4C,6C,8C
-WITH KEY



EX-121 3-WAYS MODULAR JACK



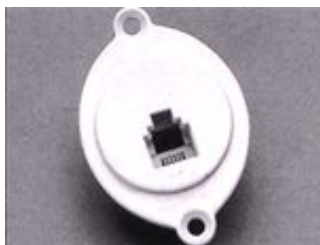
EX-124 SURFACE JACK WITH DUAL JACKS
-4Cx2



EX-132 MINI TYPE SURFACE JACK



EX-135 CIRCULAR MODULAR JACK



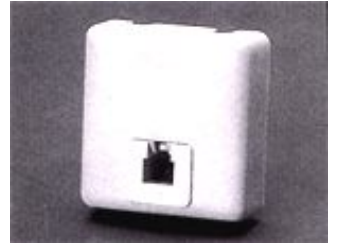
EX-136 MODULAR RETRO FIT
PLUG
-4C
-6C



EX-137 MODULAR JACK



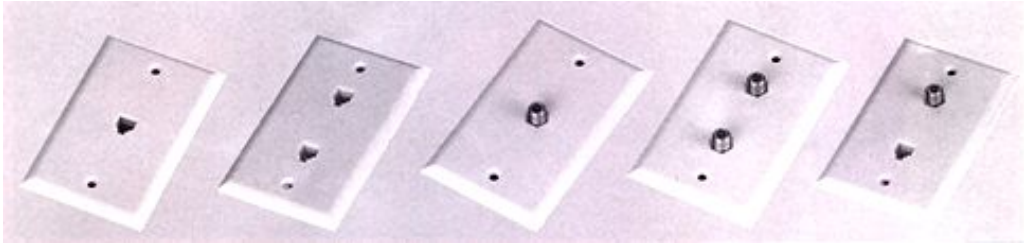
EX-138 SUPER MINI SURFACE
JACK
-4C
-6C



EX-139 CADDY REEL

EX-140 CONNECTING BLOCK

EX-141 SURFACE JACK
-4C
-6C



EX-111W

EX-113W

EX-1149A

EX-1149B

EX-1149C



EX-301 SWEDEN PLUG TO
SOCKET
瑞典



EX-302 SWEDEN PLUG 瑞典



EX-303 FINLAND PLUG 芬蘭



EX-304 SWITZERLAND PLUG 瑞
士



EX-305 SWITZERLAND PLUG
瑞士



EX-306 DENMARK PLUG 丹麥



EX-307 DENMARK PLUG TO
SOCKET 丹麥

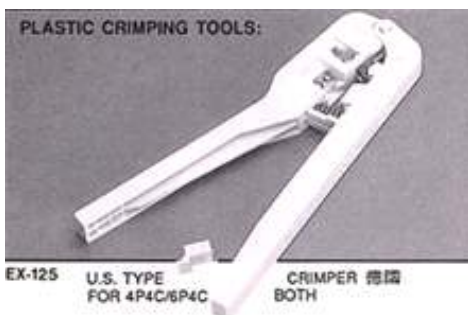


EX-308 NETHERLANDS PLUG
荷蘭



EX-309 IRAN PLUG 伊朗

PLUGS (U.S./U.K.)

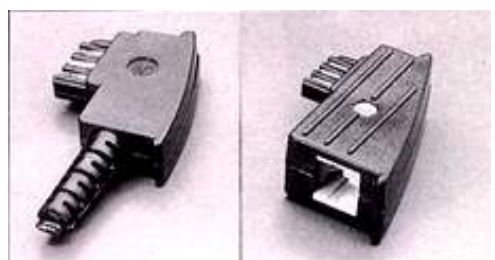


PLASTIC CRIMPING TOOLS:

EX-125

U.S. TYPE
FOR 4P4C/6P4C

CRIMPER 德國
BOTH



EX-310 GERMAN PLUG 德國

EX-311 G. PLUG TO U.S. SOCKET



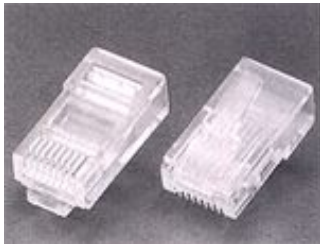
EX-4P2C
-4P4C



EX-6P2C
-6P4C
-6P6C



EX-8P6C
-8P6C
(WITH KEY)



EX-8P6C
-8P6C
(W/O KEY)



EX-6P4C DEC TYPE
-6P6C



EX-10P8C
-10P10C



U.K. RIGHT SIDE
EX - 6P2C
- 6P4C
- 6P6C



U.K. LEFT SIDE
EX - 6P2C
- 6P4C
- 6P6C



EX - 8P8C+SR





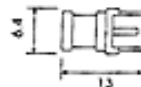
SMB-9108

RIGHT ANGLE SMB MALE CLAMP
RG 174U/316U/188U



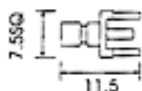
SMB-9109

SMB MALE PCB MOUNT



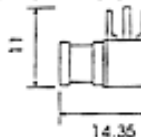
SMB-9110

SMB FEMALE PCB MOUNT



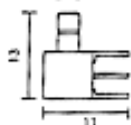
SMB-9111

RIGHT ANGLE SMB MALE PCB MOUNT



SMB-9112

RIGHT ANGLE SMB FEMALE PCB MOUNT



SMB-9113

SMB FEMALE MULKHEAD



SMB-9114

SMB FEMALE BULKHEAD



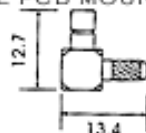
SMB-9116

SMB FEMALE PANEL MOUNT



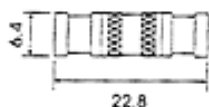
SMB-9117

RIGHT ANGLE SMB MALE PCB MOUNT



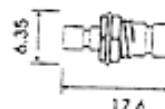
SMB-9118

SMB DOUBLE MALE



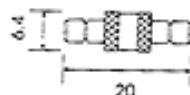
SMB-9119

SMB DOUBLE FEMALE BULKHEAD



SMB-9120

SMB DOUBLE FEMALE





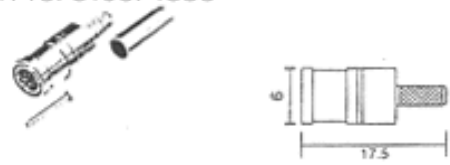
SMB-9101

SMB MALE CRIMP
RG 174U/316U/188U



SMB-9101S

SMB MALE CRIMP
RG 174U/316U/188U



SMB-9102

SMB FEMALE CRIMP
RG 174U/316U/188U



SMB-9102S

SMB FEMALE CRIMP
RG 174U/316U/188U



SMB-9103

SMB FEMALE BULKHEAD CRIMP
RG 174U/316U/188U



SMB-9103S

SMB FEMALE BULKHEAD CRIMP
RG 174U/316U/188U



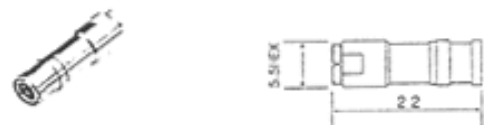
SMB-9104

SMB MALE RIGHT ANGLE CRIMP
RG 174U/316U/188U



SMB-9105

SMB MALE CLAMP
RG 174U/316U/188U



SMB-9106

SMB FEMALE BULKHEAD CLAMP
RG 174U/316U/188U



SMB-9107

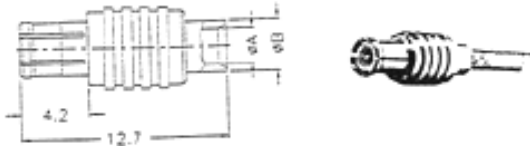
SMB FEMALE BULKHEAD CLAMP
RG 174U/316U/188U





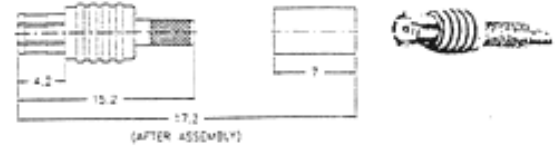
**MCX1181A1
STRAIGHT CABLE PLUG**

.085" Cable A=2.2 min, B=3.0 min



**MCX1121A1
STRAIGHT PLUG**

RG 174U/ 188U/ 196AU/ 316U



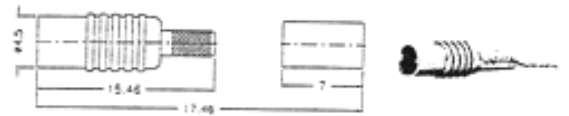
**MCX6181A1
STRAIGHT CABLE JACK**

.085" Cable A=2.2 min, B=3.0 min



**MCX6121A1
STRAIGHT JACK**

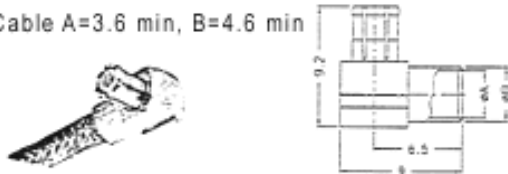
RG 174U/ 188U/ 196AU/ 316U



**MCX1182A1
RIGHT ANGLE CABLE PLUG**

.085" Cable A=2.2 min, B=3.0 min

.141" Cable A=3.6 min, B=4.6 min



**MCX1112A1
RIGHT ANGLE PLUG**



Electronics Audio/Video Computer Parts

Profile

Products

New Products

A-adcon News

Contact Us



To Connect The Future With Adcon

YI WAI INDUSTRIAL CO., LTD.

[CLICK HERE TO A & AHCON INDUSTRIAL CO., LTD.](#)

E-MAIL: yiwai751@ms9.hinet.net E-MAIL: aadcon@ms39.hinet.net

TEL:886-6-2677751~3 FAX:886-6-2696498.2697632 <http://www.a-adcon.com>

Taiwan Head office: NO 42-1, 17TH STREET CHUNG TEO, TAINAN CITY TAIWAN

A & AKCON ELECTRONIC COMPANY LIMITED

NO 1 LANE 86 yonghong diyangcao jiangbei ningbo china

[Http://www.a-ahcon.com](http://www.a-ahcon.com) Email:a-ah@a-ahcon.com a-ak@a-akcon.com

TEL:86-574-87226908 87227908 87221708 FAX:86-574-87222568



HOME



page1



RCA PLUG

MR-1001
3 RCA PLUG TO
3 RCA PLUG



MR-1002
3 RCA PLUG TO
3 RCA JACK



MR-1003
2 RCA PLUG TO
2 RCA PLUG



MR-1004
2 RCA PLUG TO
2 RCA JACK



MR-1005
QUICK F TO QUICK F
RG59U



MR-1006
BNC PLUG TO BNC PLUG
RG59U



MR-1007
2 RCA PLUG TO
2 RCA PLUG



MR-1008
2 RCA PLUG TO 2 RCA PLUG
1/2 RCA JACK ANGLE



MR-1009
F PLUG TO FRCA PLUG
RG59/60U



MR-1010
9.0MM PLUG TO
9.0MM PLUG 3C2V



MR-1011
9.5MM TV PLUG TO
9.5TV JACK 3C-2V



MR-1012
PCA TO 2 RCA PLUG 6"



MR-1013
8 RCA-8WS2-6.35.M NICKLE



MR-1014
3.5MM STEREO PLUG TO
3.5MM STEREO PLUG



MR-1015
3.5MM MONO PLUG TO
3.5MM MONO PLUG



MR-1016
SCART PLUG
TO 2 RCA PLUG





Cable terminal

MC-7020
b 4,5,6,8,10,11
d 3.5,4,4.5,6,8



MC-7021
b 8 d 4



MC-7022
b 4.2,5.2,8,10
d 3.5,4,4.4,5.2



MC-7023
b 4.2,5.2,8,10
d 3.5,4,4.4,5.2



MC-7024
b 4,5
d 4,6,8.5



MC-7025



MC-7026



MC-7027



MC-7028



MC-7029



MC-7030



MC-7031
b:12
d:6.3,4.8



MC-7032
b:12
d:2.8



MC-7032
b:12
d:12



MC-7033



MC-7034



MC-7035





MICROPHONE CONNECTORS



MX1120
SPKON(F)
2,4,8PINS



MX1121
SPKON(F)
2,4PINS



MX1122
SPKON(F)
2,4PINS



MX1123
SPKON(F)
8PINS



MX1124
SPKON(F/F)
2,4,8PINS



MX1125
SPKON(F)
2,4,8PINS



MX1126
SPKON(M),
2,4PINS



MX1128
SPKON(M)-1/4"(F).
LOCKING TYPE



MX1129
SPKON(F)-1/4"(F).
LOCKING TYPE



MX1130
SPKON(F)-XLR(F)



MX1131
SPKON(F)-XLR(M)



MX1132
SPKON(M)-XLR(F)



MX1133
SPKON(M)-XLR(M)



FUSE HOLDER

MF-571-1
Bakelite
Fuse holder
5x20mm



MF-571-2
Bakelite
Fuse holder
5x20mm



MF-571-3
Fuse holder
5x20mm



MF-571-4
Bakelite
Fuse holder
5x20mm



MF-571-5
Bakelite
Fuse holder
5x20mm



MF-571-6
Bakelite
Fuse holder
5x20mm



MF-571-7
Bakelite
Fuse holder
6x30mm



MF-571-8
Bakelite
Fuse holder
5x20mm



MF-571-9
Silver-Plate
Nickel-Plate
Fuse holder
5x20mm



MF-571-10
Brass & Nickel-plate
Fuse holder
5x20mm





FUSE HOLDER



MF-572-1
Bakelite
Fuse holder
6x32mm



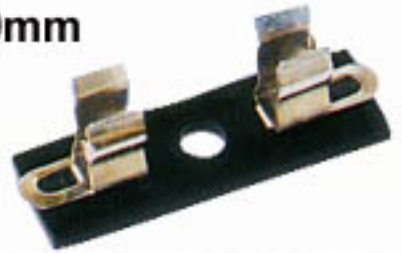
MF-572-2
Bakelite



MF-572-3
Brass & Nickel-plate
Fuse holder
5x20mm



MF-572-4
Brass & Nickel-plate
Fuse holder
5x20mm



MF-573-1
Bakelite
Fuse holder
6.35x32mm



MF-574-1
Brass & Nickel-plate
Fuse holder
6.35x32mm



MF-575-1
Brass & Nickel-plate
Fuse holder
5x20mm



MF-576-1
Brass & Nickel-plate
Fuse holder
6.35x32mm



MF-577-1
Brass & silver-plate
Fuse holder
6.35x32mm





FUSE HOLDER

MF-586-1
Brass & Nickel-plate
Fuse holder
5x20mm



MF-588-1
Brass & silver-plate
Fuse holder
6x30mm



MF-589-1
Fuse holder
6x30mm



MF-590-1
Fuse holder
6.0x25.4mm



MF-591-1
Fuse holder
6.35x30mm



MF-592-1
Fuse holder
5x20mm



MF-593-1
Fuse holder



MF-594-1
Fuse holder
5x20mm





Auto Cigarette Plug

MAC-A01



MAC-A02



MAC-A03



MAC-A04



MAC-A05



MAC-A06



Auto Cigarette Socket

MAC-A07



MAC-A08





Auto Cigarette Socket

MAC-A09



MAC-A10



MAC-A11



MAC-A12



MAC-A13



MAC-A14



MAC-A15



MAC-A16

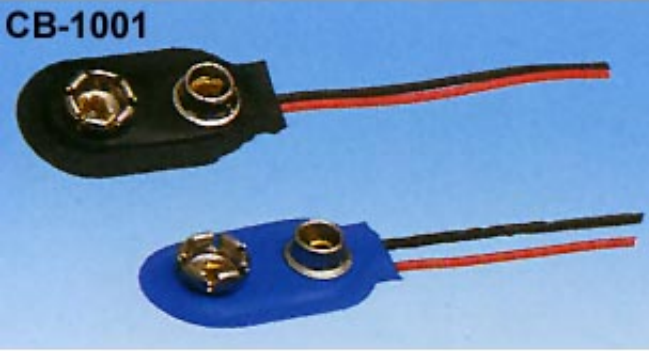




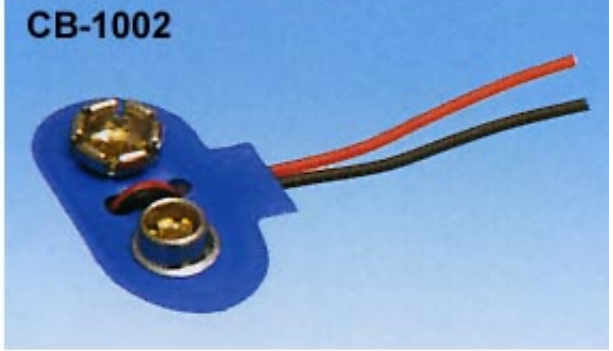
BUTTON CELL



CB-1001



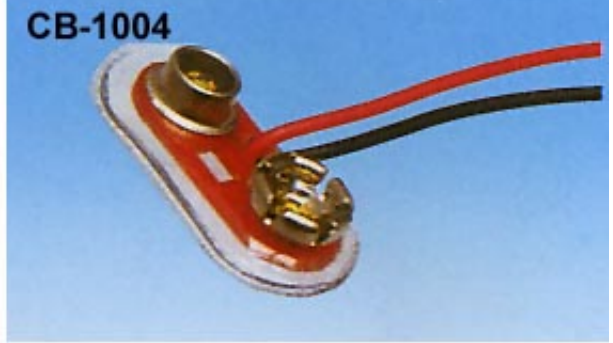
CB-1002



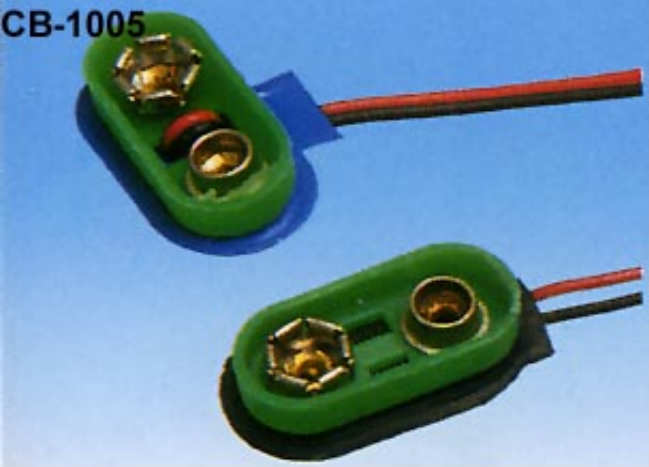
CB-1003



CB-1004



CB-1005



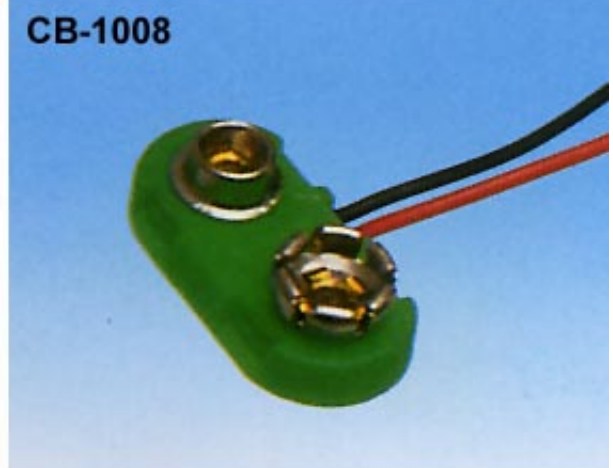
CB-1006



CB-1007



CB-1008





CELL BOX



CB-1009
58X30X14(2p,4p)



CB-1010
58X26X18 2p



CB-1011
58X45X14 3P



CB-1012
58X17X14 1P



CB-1015
68X33X18 2P



CB-1014
70X65X19 3,4P





CLIPS/TEST LEAD SETS

MC-776

BATTERY CLIP 5,10,20,25,50A
L:55,70,75,90,95,125mm



MC-777

BATTERY CLIP 30A
L:62mm



MC-778

BATTERY CLIP 5,15,20,50A
L:48,70,75,100mm



MC-779

BATTERY CLIP
L:72mm



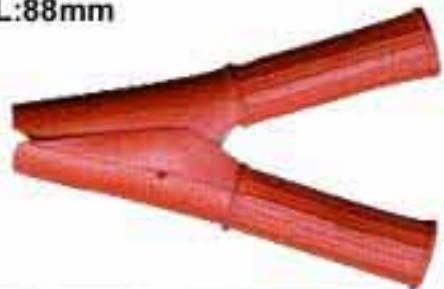
MC-780

BATTERY CLIP 200A
L:150mm



MC-781

BATTERY CLIP 50A
L:88mm



MC-782

BATTERY CLIP 500A
L:155mm



MC-783

BATTERY CLIP 6"



MC-784



MC-785



MC-786



MC-787



MC-788



MC-789



MC-790





Telephone accessories



TE-1001
80x50x15mm
6P4C/8FEET



TE-1002
80X50X9mm
6P4C/8FEET
R/B/Y/G



TE-1003
95X55X20mm
8P8C/8FEET
B/G/BLACK



TE-1004
97X65X14mm
6P4C/5M
R/G/Y/BLACK



TE-1005
85x55x10mm
4P4C/8FEET



TE-1006
85x53x19mm
4P4C/8FEET



TE-1007
35X35X25mm
4P4C/8FEET



TE-1008
80X50X15mm
4P4C/3M



TE-1009
65X55X11mm
4P4C/8FEET



TE-1010
75x53x15mm
6P4C/8FEET





Module

MM-1001



MM-1002



MM-1003



MM-1004



MM-1005



MM-1006



MM-1007



MM-1008



MM-1009



MM-1010



MM-1011



MM-1012



MM-1013



MM-1014



MM-1015



MM-1016



MM-1017





A & ADCON ELECTRONIC CO., LTD.

YI WAI INDUSTRIAL CO., LTD.

New design and function for Travel Charger



可同時使用110V or 220V電流

特色:

獨特的充放電管理電路，旋轉式插頭片適用多種插座AC~110V.220V 50Hz / 鎳氫與鋰電皆宜，不受地區限制<另附轉接頭>小巧玲瓏，方便整理易於攜帶，免除一般電限上的困擾。

Figure:

The cordless charger comes with an unique flip in turning prongs adjusted to all angles.

AC 110V~220V for both Ni an Li can use in worldwide.

The charger is so light and compact it gives you the flexibility to travel easily.

鎳氫與鋰電切換 總重量52g

型號	廠牌	機種	型號	廠牌	機種
DPE928BAA	MOTOROLA	Cd928/920/938/930	DPE6110BAA	NOKIA	6110/5110/6150/5138
DPE328BAA		328/308/338/318	DPE8810BAA		8810
DPE998BAA		V3688/V998	DPE3210BAA		3210
DPE168BAA		168/8200/87C	DPE3810BAA		3810/3110
DPEC3688BAA		m3688/d560	DPEC232BAA		232
DPES2588BAA	SIEMENS	C25/C2588	DPES600BAA	SAMSUNG	SGH 600C
DPE828BAA		S2588	DPES800BAA		800
DPE928BAA	PHILIPS	828/898	DPE788BAA	ERICSSON	788/768/T18SC
DPE929BAA		929/939	DPE388BAA		337/388/398
			DPET28BAA		T28
DPEP688BAA	NEC	G28/P688	DPEG600BAA	PANASONIC	G600

因產品種類繁多無法一一列出





CELLPHONE CHARGER FOR CAR



MODEL NO	DESCRIPTION	STANDARDS
DPE6110CBB	NOKIA 6110/5110/6150/5138	3.6V/500mA
DPE3210CBB	NOKIA 3210	2.4V/500mA
DPEcd928CBB	MOTOROLA cd928/930/938/920	3.6V/500mA
DPE788CBB	ERICSSON 788/768/T18SC	4.8V/500mA
DPE328CBB	MOTOROLA 328/308/338/318	3.6V/500mA
DPE5600CBB	SAMSUNG SGH600C	3.6V/500mA
DPE388CBB	ERICSSON 337/338/398	6.0V/500mA
DPEGD90CBB	Panasonic GD90/GD70	3.6V/500mA
DPEB908CBB	BOSCH 908/909	3.6V/500mA
DPEC2588CBB	SIEMENS C2588	3.6V/500mA

PORTABLE HANDS-FREE



MODEL NO	DESCRIPTION
DPE6110CAA	NOKIA 6110/5110/6150/5138
DPE3210CAA	NOKIA 3210
DPEcd928CAA	MOTOROLA cd928/930/938/920
DPE788CAA	ERICSSON 788/768/T18SC
DPE8110CAA	NOKIA 8110
DPE5600CAA	SAMSUNG SGH 600C
DPEGD600CAA	Panasonic G600
DPEGD90CAA	Panasonic GD90
DPEB908CAA	BOSCH 908
DPE5600CBA	SAMSUNG SGH 600C
DPE6110CBA	NOKIA 6110/5110/6150/5138
DPE8110CBA	NOKIA 8110
DPE3210CBA	NOKIA 3210
DPEC2588CAA	SIEMENS C2588

SUPER ALKALINE BATTERY



MODEL NO	DESCRIPTION	SIZE
LR03-F	LR03 ALKALINE BATTERY FREE MERCURY (SHRINK PACK)	AAA
LR03-L	LR03 ALKALINE BATTERY FREE MERCURY (SHRINK PACK)	AAA
LR03-H	LR03 ALKALINE BATTERY FREE MERCURY (SHRINK PACK)	AAA
LR03-F	LR06 ALKALINE BATTERY FREE MERCURY (SHRINK PACK)	AA
LR03-L	LR06 ALKALINE BATTERY FREE MERCURY (SHRINK PACK)	AA
LR03-H	LR06 ALKALINE BATTERY FREE MERCURY (SHRINK PACK)	AA
R6P	R6P ZINC CHLORIDE BATTERY (EXUTRA HEAVY DUTY)	AA
R03P	R03P ZINC CHLORIDE BATTERY (EXUTRA HEAVY DUTY)	AA





A & ADCON ELECTRONIC CO., LTD.

LEATHER CASE

大哥大真皮皮件



High Quality Itaiy Leather Case for all Cellphones

Italy Brand with Genuine
Leather
Irradiation-Resistant
High Quality Magnet Knob
YKK Zipper

PVC Slice-High Transparent, COLD &
Heat-Resistant
Fashionable Design
Various Kinds of Types
we are looking for wholesaler & Agent.



Page75



HOME



Page77

Then I'll Receive Your Mail





Battery Models for Cell Phone



DPK611LD1
 LI-ION 3.6V
 1000mAh
 NOKIA 6150/
 6110/5110



DPK3210NB3
 NI-NH 2.4V
 1250mAh
 NOKIA 3210



DPS8810LB1
 LI-ION 3.6V
 900mAh
 NOKIA 8810



DPK8810LB1
 LI-ION 3.6V
 900mAh
 NOKIA 8810



DPK788LB1
 LI-ION 4.8V
 900mAh
 ERICSSON 788
 /768/T18SC



DPK388NB3
 LI-MH 6.0V
 600mAh
 ERICSSON 337
 /388/398



DPKT28LC1
 LI-ION 3.6V
 900mAh
 ERICSSON
 T28SC



DPK928LB1
 LI-ION 3.6V
 900mAh
 MOTOROLA
 cd9
 28/930/938



DPK998LB1
 LI-ION 3.6V
 680mAh
 MOTOROLA
 V99
 8/V3688/L2000



DPK328LC2
 LI-ION 3.6V
 680mAh
 MOTOROLA
 338
 /328/308



DPKs600LC2
 LI-ION 3.6V
 1000mAh
 SAMSUNG
 SGH-
 600C



DPKs800LC1
 LI-ION 3.6V
 1000mAh
 SAMSUNG
 SGH-
 800C



DPKs800LB1
 LI-ION 3.6V
 1700mAh
 SAMSUNG
 SGH-
 800C



DPKGD90LA1
 LI-ION 3.6V
 1550mAh
 PANASONIC
 GD
 90/GD70



DPKGD90LB1
 LI-ION 3.6V
 900mAh
 PANASONIC
 GD
 90/GD70



DPKGD90LC1
 LI-ION 3.6V
 640mAh
 PANASONIC
 GD
 90/GD70



DPK828LC1
 LI-ION 3.6V
 600mAh
 PHILPIS 828/
 898



DPK929LB1
 LI-ION 3.6V
 1000mAh
 PHILPIS 929/
 939



DPK2588LB1
 LI-ION 3.6V
 680mAh
 SIEMENS S25
 88



DPK2588LB1
 LI-ION 3.6V
 850mAh
 SIEMENS C25/
 C2588



DPKB908NA1
 NI-MH 3.6V
 700mAh
 BOSCH 908



DPKB908LB1
 LI-ION 3.6V
 680mAh
 BOSCH 908



DPKD2100LB1
 LI-ION 3.6V
 950mAh
 NEC DB2000/
 DB2100



 **A & ADCON ELECTRONIC CO., LTD.**
YI WAI INDUSTRIAL CO., LTD.
COMPUTER MULTI-APERTURED CONNECTOR



MA-5301



MA-5501



MA-5302



MA-5502



MA-5303



MA-5503



MA-5504

MA-5210
13PIN PLUG-13PIN PLUG (21-21)

MA-5211
15PIN PLUG-15PIN PLUG (21-21)

MA-5212
21PIN PLUG-5PIN PLUG (21-21)

MA-5213
21PIN PLUG-6PIN PLUG

MA-5214
21PIN PLUG-6PIN DIN PLUG+6PIN DIN PLUG

MA-5215
21PIN PLUG-6PIN DIN PLUG+2RCA PLUG

MA-5216
21PIN PLUG-9PIN PLUG (21-21)

MA-5217
21PIN PLUG-21PIN PLUG

MA-5218
21PIN PLUG-21PIN SOCKET

MA-5219
21PIN PLUG-21PIN PLUG+4RCA PLUG

MA-5220
21PIN PLUG-21PIN PLUG+2RCA PLUG

MA-5221
21PIN PLUG-2RCA PLUG

MA-5222
21PIN PLUG-3RCA PLUG

MA-5223
21PIN PLUG-4RCA PLUG

MA-5224
21PIN PLUG-4RCA JACK

MA-5225
21PIN PLUG-6RCA PLUG

MA-5226
21PIN PLUG-6RCA PLUG+3.5MM MONO JACK

MA-5227
21PIN PLUG-2BNC PLUG+ 4RCA PLUG 3.5MM MONO JACK



Tubular Advertising Light

二線彩虹燈管
Two wire rainbow lamp



方型二線彩虹燈
Square two wire rainbow lamp

FN-S-2L

電 壓	總長度	單元燈炮數	單元長度	包裝尺寸
12V	6M	5-6-8	0.056M	24x24x8
24V	10M	10-12-16	0.11M	24x24x10
110V~120V	50M	18	0.5M	36x36x16
220V~240V	100M	36	1M	36x36x24

FN-2L-100M 13M/M
MFN-2L-100M 9.8M/M

電 壓	總長度	單元燈炮數	單元長度	包裝尺寸
12V	6M	5-6-8	0.056M	24x24x8
24V	10M	10-12-16	0.11M	24x24x10
110V~120V	50M	15-18	0.5M	36x36x16
220V~240V	100M	30-36	1M	36x36x24



方型三線彩虹燈
Square three wire rainbow lamp



FN-S-3L

電 壓	總長度	單元燈炮數	單元長度	包裝尺寸
12V	6M	12	0.11M	24x24x8
24V	10M	24	0.22M	24x24x10
110V~120V	50M	36	1M	36x36x16
220V~240V	100M	72	2M	36x36x24



整條燈管有多種顏色
可做耶誕節燈飾，廣告招牌，美術燈...等等
可自行DIY



Flexineon consists of bulbs, P.V.C. and metal wires.
Can use it with 6 different types and 8 different colors
The applications of flexineon unlimited.
Decorate the building, street, show, festival and all occasions.
Also can us it for artistic designs, sign making.

HOW TO USE THE FLEXINEON

1. Where to cut

A: Can only be cut at the indicated place with scissors mark

B: After cutting, bend the FLEXINEON, then cut off the extra copper wires.

2. How to connect to Power Cord

with our power connector.

3. How to deal with the End of FLEXINEON

Cover it with our correct End Cap, and then seal it with glue in order to make it waterproof or to avoid Children's touch.

4. For outdoor use, do not forget to seal every connecting points with silicon glues.



Cautions:

A: Do not plug in before the installation / assembling of the FLEXINEON is finished;

B: The Voltage of the Power source shouldn't be higher than the limited voltage of the FLEXINEON;

C: Don't light on the FLEXINEON while it's in the rolls;

D: Make sure to give the FLEXINEON with enough space for cooling down when it's in use;

E: The FLEXINEON has Max. using length, for 240v FLEXINEON, it's 100m

For 120v---50m.

For 24v---14m.

For 12v--- 7m.



FLEXINEON consists of bulbs, P.V.C. and metal wires. You can use it with 6 different types and 8 different colors. Red, Green, Yellow, Blue, Purple, Orange and clear is available. Extrusion of each color has protective u.v. additions.

The applications of FLEXINEON are unlimited. We use it to decorate the buildings, streets, clubs, restaurants, hotels, parks, stages, facades, festival, shops festival and all occasions. We also can use it for artistic designs, sign making.

Page78



Page80

Then I'll Receive Your Mail





TELEPHONE PLIER

HY-210N

HY2098 8P8C/RJ45
HY2098 6P6C/RJ11,12 6P2C
HY2094 4P4C,4P2C



HY-210T

8P8C/RJ45, RG58/59



HY-210F

8P8C/RJ45&6P6C RJ11,RJ12 6P2C



HY-210A

CRIMPING-SUB 26-28 AWG
CONNECTORS 22-28 AWG
SPADE LUGS 22-26 AWG



HY-210B

CRIMPING BUTT-INSULATED CONNECTORS
TELEPHONE SPADE LUG, NON-INS
CONNECTORS 14-22 AWG AND NON-INS
TERMINAL(SOLDER) 10-12 AWG



HY-211



HY-212

HY-5021 22,20,18,16,14,12,10AWG/0.6,0.8,1.0,1.3,1.6,2.0,2.6mm
HY-5022 24,22,20,18,16,14AWG/0.5,0.6,0.8,1.0,1.3,1.6mm
HY-5023 30,28,26,24,22,20AWG
0.25,0.32,0.4,0.5,0.6,0.8mm



HY-213

0.2-6mm



HY-213N

HY-369A 0.5,1.2,1.6,2.0mm
HY-369B 1.0,1.6,2.0,2.6,3.2mm
HY-369C 22,16,14,12,10,8AWG





TELEPHONE PLIER

HY-214

For IDC type terminals
terminal height:6-27.5
blade length:240mm



HY-215



HY-216

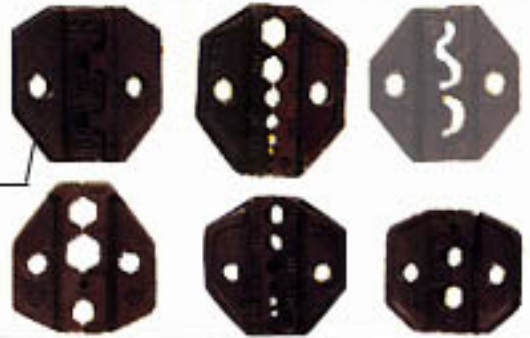
AWG 22-18,16-14,12-10



HY-217



HY-218



HY-219



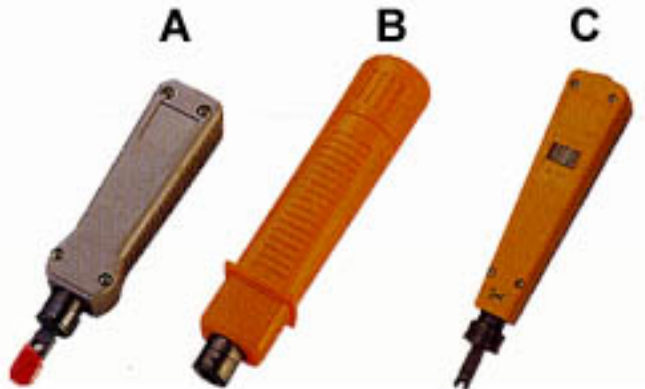
HY-220



HY-221



HY-222





TELEPHONE PLIER

HY-223



HY-224



HY-225



HY-226



HY-227



HY-228



HY-229



HY-230



HY-231



HY-232



Page 81



HOME



Page 82

Then I'll Receive Your Mail





COMPUTER CONNECTORS



CM-1001
CN36M,25C/18C



CM-1002
DB25M



CM-1003
DB9M/9F



CM-1004
DB15M/15F



CM-1005



CM-1006



CM-1007



CM-1008



CM-1009



CM-1010



CM-1011



CM-1012





COMPUTER CONNECTORS



CM-1013



CM-1014



CM-1015



CM-1016



CM-1017



CM-1018



CM-1019



CM-1020



CM-1021



CM-1022



CM-1023



CM-1024





COMPUTER CONNECTORS



CM-1025



CM-1026



CM-1027



CM-1028



CM-1029



CM-1030



CM-1031



CM-1032



CM-1033



CM-1034



CM-1035



CM-1036





CAR ACCESSORIES

BT-1001
Air Compressor



BT-1002
Air Compressor



BT-1003
Air Compressor
DC 12v 250PSI



BT-1004
Air Compressor
DC 12v 250PSI



BT-1005
Air Compressor
DC 12v 250PSI



BT-1006
Air Compressor
DC 12v 250PSI



BT-1007
Air Compressor
3 IN1



BT-1008
Air Compressor
3 IN1



BT-1009
Air Compressor



BT-1010
Air Compressor





CAR ACCESSORIES

BT-1011
Air Compressor
DC 12v 250PSI



BT-1012
Air Compressor



BT-1013
Air Compressor



BT-1014
Air Compressor



BT-1015
Vacuum Cleaner
DC 12V 93W



BT-1016
Vacuum Cleaner
DC 12V 35W



BT-1017
Auto Heater
DC 12v 150W/200W



BT-1018
Auto Heater



BT-1019
UE Battery Chargers



BT-1020
UE Battery Chargers





Caremic Lampholder

MC-1001



MC-1002



MC-1003



MC-1004



MC-1005



MC-1006



MC-1007



MC-1008



MC-1009



MC-1010



MC-1011



MC-1012



MC-1013



MC-1014



MC-1015



MC-1016



MC-1017





Caremic Lampholder

MC-1018



MC-1019



MC-1020



MC-1021



MC-1022



MC-1023



MC-1024



MC-1025



MC-1026



MC-1027



MC-1028



MC-1029



MC-1030



MC-1031



MC-1032



MC-1033



MC-1034

